

The
Wisdom
of
TAO®

ORACLE CARDS

Volume I - Awakenings

By Mei Jin Lü

Copyright © 2020 Mei Jin Lü

All rights reserved. The illustrations, cover design, and contents are protected by copyright. No part of this book may be reproduced in any form without permission in writing from the publisher, except by a reviewer who wishes to quote brief passages in connection with a review written for inclusion in a magazine, newspaper or website.

10 9 8 7 6 5 4 3 2 1

Made in China



Published by
U.S. GAMES SYSTEMS, INC.
179 Ludlow Street
Stamford, CT 06902 USA
www.usgamesinc.com

TABLE OF CONTENTS

INTRODUCTION	6	HOW TO USE	14
ABOUT THE AUTHOR	12		

ORACLES AND BACKGROUND

SPIRITUAL GUIDANCE

NEW BEGINNINGS	33	JUSTICE	77
MANIFESTATION	37	CHANGE OF DIRECTION.....	81
COMPASSION	41	TRANSFORMATION	85
ABUNDANCE.....	45	BALANCE.....	87
LEADER	49	TEMPTATION	91
SAGE	53	SURRENDER.....	93
LOVERS & PARTNERSHIP	57	LONGEVITY	97
MASTER.....	61	MOON.....	101
STRENGTH	65	SUN	105
WALK AWAY	69	KARMA	107
THE WAY	73	VICTORY	111

ELEMENTS

RELEASE METAL.....	115
GROWTH WOOD	119
INSPIRATION WATER	121
NEW JOURNEY FIRE	125
PROTECTION EARTH	129
GOD OF WEALTH METAL	133
RELATIONSHIP HARMONY WATER.....	137
SPACE CLEARANCE FIRE.....	141
INNER WISDOM WOOD	145
CONFLICT EARTH.....	149
BRIGHT FUTURE BALANCED ELEMENTS.....	153

ZODIAC

FOCUS Rat.....	157
GROUNDING Ox.....	159
CONFIDENCE Tiger.....	161
TRUTH Rabbit	163
POWER Dragon	165
OPPORTUNITY Snake.....	167
FREE SPIRIT Horse	169
CAUTION Goat	173
TRICK Monkey	175
COMMUNICATION Rooster.....	177
INTUITION Dog	179
CONTENTMENT Pig.....	181
ZODIAC ANIMAL CHART	184

INTRODUCTION

FINDING THE WAY

The Tao, or The Way, is a philosophy describing our place and actions in the universe. Everything of this world is changeable. Yet, though all things are transitory, the universe is eternal and unified. The central figure in the Taoist pantheon was the sage, Lao Zi, the enigmatic teacher and founder of Tao, who is credited with writing the *Tao Te Ching*. Through the *Tao Te Ching*, Lao Zi poetically and profoundly illuminates and points The Way for all of us; the unknowable becomes knowable.

As with many ancient systems of thought and the related tools devised to harness their power, few contemporary people can fully understand the philosophy, let alone utilize its wisdom.

This Wisdom of Tao Oracle system was devised with a desire to carry on the work of the sages. It is a complete system to help us understand ourselves and our journey in life.

If you want to understand the Tao and Taoism, you first should be involved with the vibrant energy of living, to live a life — quite simple in concept but difficult to do. It is to follow The Way. The universe and all life has been established this way for millions of years; animals, plants, objects, humans, the interaction of all of these, and creation out of that interaction all follow the natural law of The Way. If people ask why we constantly fight and struggle and why there is much illness and heartbreak, one of the answers may be that we have violated the basic way of living. Therefore, this deck of cards uses the platform of the Oracle to re-introduce the concept of The Way. Use them to lay a foundation, as a blueprint, or a map. Let them guide you along the natural path to harmony and peace. The Taoist oracle will effectively help you to achieve success in any endeavors.

THE LEVELS

This Taoist divination system was inspired by the mysticism of ancient tarot, culture, philosophy, history, and interpersonal psychology. There are three levels to this 45-card structure. Each one works collaboratively to bring the wisdom and living experience of Tao through the historical figures, sages, and animal spirits.

The top level of 22 cards provides spiritual guidance for the journey of the soul. The other two levels consist of 11 elements and 12 zodiac animals. They are designed to help you understand yourself and your environment and guide you to find directions and answers.

In the first level the ancient Chinese figures are used to spur you towards deepening your perception and potential in life. The second level (the elements) employs the Taoist concepts of nature's five elements: fire, metal, water, wood, and earth and the interactions between them. The elements are the key to energy changes. They can be used to analyze your situation and predict the future based on the behavior patterns of the elements involved. The third part of the system, the lowest level, invokes the twelve zodiac animals, starting with the rat and ending with the pig. It represents a more physical level of energy and is the most accessible to use. Animals are here to help solve problems and to answer day-to-day mundane, but important questions, such as, "To which school shall I apply?" or "Is this the right house for me?"

The essence of each of the three levels should be understood when using this

system. The higher the level is, the more conceptual it is. The lower the level is, the more tangible it is. Each of the cards can be used singularly or combined with others to create a scenario, tell a story, or show The Way.

22 Taoist deities, sages, and historical figures (Highest level)

11 Elements (Middle level)

12 Zodiac animals (Lowest level)

CARD MEANINGS

Every oracle has its summary meanings on the card. More detailed and in-depth meanings can be found in the guidebook section. The background portion contains the story of the oracle. By understanding the background, you will get a fuller picture of the answer you seek. More importantly, you will learn the wisdom of the deity or sage by tapping into that energy.

Normally and most likely, you will get a mix of all three levels of cards. However, it is possible to get a majority of cards from one level. This is speaking directly to your specific situation.

If you get many deities and sages, your question or personal situation is either more involved with your spiritual development or the search for your life's purpose. What you are looking for is above the mundane world. If you receive many element cards, you might need some guidance or explanation concerning your current circumstances. The elements help you to analyze and comprehend the situation in question. If you draw mostly animal cards, you may need some assistance to solve a specific problem. The animals can provide you with some direct action plans.

In addition to the action plan or direct advice given, an animal card might be communicating to you about someone born in that zodiac year or, it simply may be showing the character and personality of a person born with that sign. Consult the Zodiac Animal Chart on page 184 to find out one's corresponding sign. Its purpose is to help you understand your situation and action plan better. It doesn't mean all people who were born in that year share the same personality and qualities. However, there is a powerful mystical connection between zodiac animals and people. Sometimes, the animals that show up in your drawing have nothing to do with the action plan. The animal simply may represent you or someone in your life. For example, suppose you get the card, Mu Lan New Journey, and on the next card

of the same reading, you receive the Rabbit card. If you or the subject of the reading were born in the year of the rabbit, it could mean that you or that person will embark on a new journey. The journey could be either metaphorical or physical. At other times, the animal could appear as a medium or mystic messenger. If a deceased loved one was born in that animal zodiac year, it may mean that deceased loved one has a message for you.

KNOWING

The purpose of the Oracle deck is tied to the Taoist belief that everyone is born with intuition or inner knowing. By finding the natural way of living, you tap into that inner knowledge. Every card of the deck is infused with the power to assist you to connect with ancient sages and teachings that are not readily available today. To clearly see, feel, hear, smell and touch are all included in the process of preparing the reading, asking your questions, drawing the cards, sensing the cards, and interpreting their answers. You are developing your gift through learning and living the wisdom of Tao. It is a natural process. With time and practice, your intuition will unfold. Follow the wisdom of the Tao with an open mind. Walk the natural way to live your life's purpose.

ABOUT THE AUTHOR

Mei Jin Lü, PhD, is a Taoist philosophy teacher and a 25th generation descendant of the ancient Quan Zhen Tao Lineage. She lectures worldwide on various disciplines of Eastern philosophy. She is the founder of the School of Eastern Philosophy, and the President of the U.S. Health QiGong Association, U.S. Taoist Association, and owner of “Qi” Wellness Center in N.J.

Mei Jin teaches the wisdom of Taoism, concentrating on the total well-being of the body, mind and soul. She emphasizes aspects of the ancient sciences and practices that align with western approaches. Her profound knowledge and appreciation of both cultures allow her to present these Eastern modalities to a Western audience in a way they can understand and apply successfully. These include fundamental theories of Yin Yang, Five Elements, Ba Gua and Feng Shui, as well as some more advanced topics like I Ching, Taoist mediumship, Chinese Astrology, and Taoist anti-aging healing and wellness methods.

Mei Jin holds bachelor's degrees in Computer Science and English, and a master's degree in Information Science and Technology. This unique blend of analytical skills along with her spiritual attunement helps her to achieve a balance between science and metaphysics.

Mei Jin is the creator of the Wisdom of Tao Oracle cards, which is an exclusive divination system that is unique and original. Taoism is generally considered esoteric and ancient. Its philosophy and wisdom are not easily accessible or well understood, especially by Westerners. Using her experience as a Taoist seeker, teacher, counselor and master, Mei Jin created this divination tool, The Wisdom of Tao Oracle cards, that people can use effectively to help themselves.

Volume I Awakenings (2013)

Volume II Strategy (2015)

Volume III Forecast (2021)

HOW TO USE

1. Cleansing and Preparing the Cards

Prepare the cards by cleansing the deck. For a new deck, or after a period of use when the energy feels static, place the cards in sunlight for a couple of hours. Cleanse the box and guidebook similarly along with the cards.

You can also put the deck outside under a full moon or use your favorite essential oils. When using the oils, put a couple of drops on your palm, rubbing both hands together for a few seconds and gently touch the cards one by one.

Next, blend your energy with the energy of the deck. Go through each card, look at the image, and feel the energy. Afterwards, hold the entire deck to your heart chakra and bring yourself to a meditative state. Ask the spirits and deities of the cards to link with you. Put the deck back into the box. Put the box on an altar, under your pillow, or on your nightstand overnight. Now, it is yours and is ready to use.

2. Connecting Before Drawing Cards

Don't draw the cards if your mind is not centered, or if you are scattered, upset, anxious, or if you are in a noisy place. Before you draw, wash your hands, hold the deck with images inward towards your heart, and say a prayer. The intention is to connect your energy with the spirit and energy of the past masters, zodiac animals, and elements. Use prayer, affirmations, or anything that you believe can help you focus.

3. Preparing Your Questions

Shuffle the cards. You can shuffle any way you want — poker style, tarot style, etc. While shuffling, some cards will fall out and often those are part of the answers. Don't ignore those cards. When you have a sense that you are done shuffling, place your cards on the table, and cut the cards with the intention of the question. You can cut the deck with either hand. The top portion cut can be placed aside or under the bottom portion. Then draw the cards from what is now the top portion. There are three kinds of questions in general:

a. Checking in questions:

“What’s the situation right now?”

“What’s going on with my business?”

“How is the health of my mom?”

b. Yes or No specific questions:

“Should I spend more money on advertising?”

“Should I go?”

“Is he the right one?”

c. Follow up on either of (a) or (b) above, by asking How? Why? What? When? Where? These follow up questions must be asked one at a time. For example,

“Why shouldn’t I go?”

“What must she do to get better?”

“When will she get better?”

“How can I recognize the right one?”

4. Tips about asking questions:

a. Direct and clear:

Suppose you ask, “How is my business?” If you draw a card that tells you to change direction, ask the cards, “How do I change direction?” However, if you are very sure that your business is not doing well, then you can bypass the first question and directly ask the cards: “What shall I do to boost my business?” Take your time to form your question. It is a process of concentration.

b. Simplify your questions.

Do not ask questions like, “Shall I go to California or Utah?” Instead, make the question simple by dividing it into two questions. First, ask “Shall I go to California?” Then, you can ask “Shall I go to Utah?”

c. Narrow the questions down:

Avoid vague or large questions. Specify and narrow the question down step by step to limit the scope of the question for more accuracy and clarity.

5. Understanding the Answers

The selected cards may appear as Yes, No, or Neutral. Usually the answer is right on the card. However, the card oracle is a short summary. Read the guidebook message to gain a more in-depth understanding of why you got this card. The card image, color, symbol, words, etc. are the hints and clues to the answers to your questions. The same cards can elicit different feelings in different people.

Since each person's interpretation of the image, symbol, and colors can be different, pay careful attention to your first impression upon seeing the card. Your interpretation and intuition are the key here. You are not making things up. The answers of your questions are being delivered as a combination of your own understanding of the matter at hand, the guidance written on the card that you just drew, and your profound inner ability of knowing. If you want to understand more about the Taoist master that the card represents, read the background as well.

If an answer comes up that you don't understand, and there is no obvious "yes or no" or "when or why"; then leave the card that you don't understand on the table.

Shuffle the rest of the deck. You may say, “I don’t understand, please clarify” or simply say, “Give me another card.” Then, shuffle the cards again while focusing on the essence of the question. Repeat your questions while you are shuffling the cards. Take your time shuffling, making sure the question is as clear as possible before drawing a new card.

You can repeat this process until you are satisfied. Notice the understanding, reading, and the energy around you will shift while you are pulling a new card. Sometimes the answers are immediately recognizable on the new card, and sometimes the new card will remind you of something else that you haven’t considered previously, which reveals the answers to your earlier question.

6. The Layout of the Cards

Single Card Drawing:

For example,

“What is my relationship with Z?”



Suppose you get the card of Karma in response to your question.

It can indicate that the relationship you have with Z may not be fulfilling or smooth, but it doesn't look like you can break away from it. Maybe there is a karmic connection between you and Z. Maybe there is more to it than you can understand at the moment. One approach would be, after drawing the first single card (Karma), you can ask “What's the past life or karmic connection between us?”

Alternatively, you could ask, “What shall I do to improve this relationship?” You then draw another single card to expand upon the first card. You can repeat as many times as you are guided to, each time drawing a single card. It can grow into a story. For example, after getting the Karma card, you may draw the card, Compassion, Guan Yin after your follow-up question.



The card, Guan Yin, is advising you to “embody compassion, to open your heart to kindness, and see the world with unconditional love and forgiveness.”



You may continue by asking, “How do I do that?” If you were then to select the Walk Away card, the interpretation of the card tells you to let go of burdens and attachments. Surrender your ego and walk away. Feel the freedom and enlightenment as you rise above petty matters. Accept things as they are; no one is perfect.

You can create any scenario by building the link one by one based on the interrelationship between the cards vertically.

Double card drawing:

Two cards involve dual relationships or situations. This can be defined by you. This is one of the principles of Tao. It is about two: yin and yang; yes and no; one force and the opposite of that force, etc. When you form your question, keep the tai chi symbol ☯ in your head. The question concerns two parts, and the two parts are contained in a whole. Be willing to see and understand that everything in the universe has at least two sides. That is the first step of learning the wisdom of Tao.

Two cards are placed, one to your left and the other to your right. Regardless of whether you are left- or right-handed, the left is always the first card. This card is about you. To the right is the second card, which is about someone other than you. If

you ask a marital question or question regarding a parent-child relationship, the left card is you, and the right card would refer to a spouse or child. If the reading is not about anybody specific, the left card represents the more important aspect of your pursuit.

The difference between single and double card drawings is that double cards start out with a relationship, which is represented horizontally instead of vertically. A single card drawing starts out as one independent question or issue. As shown above, a relationship between these single card draws can grow vertically from the first single card answer (in this example: Karma). You can now analyze an entire situation by mapping your reading based on the interrelationship between the cards vertically and horizontally.

Triple card (or more) drawing:

This is one of the most common and flexible layouts for oracle use. Usually it represents past, present, and future; or mind, body, spirit, or anything you can come up with at the time of the reading. For example, the three cards can be:

Middle card: “What is the central issue?”

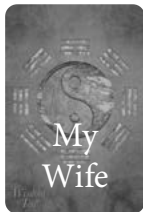
Left card: “What is the cause of the issue?”

Right card: “What is going to happen?”

If you want to know about something that involves three people or more; the left card always represents you.

You can define who is in the middle, and who is on the right, and so on. For example, I just got an overseas job offer. It is exciting and more money. But, I am not sure if I should take this opportunity, and I am not sure how this would impact my family. So, I ask, “What is the impact on the following if I take this job?”

The three-card layout evolved from the one- and two-card layouts. You always place



the most important one in the left as it is explained in the double card drawing section. You can treat the third column here, “My Children” as a single card draw if you don’t want to emphasize the relationship between “My Children” and the job overseas, My Wife and Me.

Sometimes three or more card layouts can be categories that can stand independently. The layouts for past, present, and future, or me, her, and him, do have a relationship with each other. Category layouts on the other hand have no relationship to one another. An example may be, I am considering a move and I have three states in mind: Florida, Georgia and Arizona. Florida is intended to be my first choice, so that defines the first column of your three-card drawing. The first card on the left represents Florida. You can treat each state as a single card, and ask questions based on the answer of each column.

Now you should be comfortable to combine all card drawings in whichever format, order or pattern you wish. All of these methods are just to give you a jump start. Led by your intuition and intelligence, you can create your own layout once you have become familiar with these preliminary methods. Experienced readers can use

any card spreads they have used before. Here is an example of combining all three drawing methods:

What is the impact on the following if I take this job?

Me



My Wife



My Children



Tell me something about Zach? →



What is my relationship with Zach? →



Trust your natural gift, and don't worry about picking up the wrong cards. Make sure the question you ask aloud matches your heart's intent. If you follow the steps for cleansing and preparing; and are crystal clear when you ask the question, these are the right cards. Even if you don't understand it, this is the reading you are meant to receive. The system is designed to encourage the use of your own power or gut feeling during the drawing. The first impression upon drawing a card tells you 80% of what you want to know. Don't disregard that feeling.

Sometimes, certain cards may show up because they picked up on the energy of your thoughts and concerns at the time of the reading. Try to purify your mind by releasing any anxieties before the drawing. If you learn to have an open mind without any expectations, you will hear, see, and sense more clearly.





ORACLES and BACKGROUNDS

SPIRITUAL GUIDANCE

NEW BEGINNINGS *Zhang Liang*

There is a path in front of you that you cannot see, but you know it's there. You do not know where it leads, but you're eager to travel on it. Every new beginning is accompanied by the unknown. There is no place for fear of the unknown and no danger in treading where you have not walked before, because you are divinely guided.

Many go through life never finding out what that path is and what's at the other end. But if you've picked the card of Zhang Liang, it's your calling to embark on this path, to experience its meaning, and to grow from it. Doors that don't exist for others will open for you.

The new beginning could be a new relationship, or a positive shift in an existing relationship, either romantic or platonic. It may be a new partner in business, a new job, a new school, a new family, baby, pet, etc. or it may be a possible move.



Relish the excitement of a new journey and refrain from demanding proof of eventual success. Permit your spiritual guide to walk beside you and encourage your intuition to work through you. Everyone's journey is different. It will lead you where you need to be at this juncture in life. Success is destined but the goal could be vague. It's not important to understand it so early in the journey.

Although you are safe to explore possibilities, you are still advised to seek the wisdom of others and learn the lessons of humility and sacrifice. Vow to remember the kindness of those who accompanied you along the way.

Stop occasionally to contemplate and reflect because you may stumble into some detours. The journey would not be satisfying without twists and turns. Pay attention to details. This card is about the energy of youth, and about connecting with your guide. Find a mentor, whether it's a book, a person, or a spiritual teacher. If the guide is not apparent, simply call upon Zhang Liang's spirit. Hold the card in your palm, breathe life into the card, and with all sincerity, ask to be connected with the right person and the right place, and to act upon the right initiative and inspiration.

BACKGROUND

The story of Zhang Liang is that of a young man, innocent and humble, embarking on a life journey that resulted in the founding of the greatest dynasty in Chinese history. One day, the young Zhang Liang was crossing a bridge when a disheveled old man came forward and asked to meet him at dawn in five days. He had a special gift for the young man.

Zhang Liang was intrigued, and five days later he arrived at dawn to see the old man already waiting for him. The old man said in an angry voice, “How can you be late to a meeting with an elder? Come back in five days.” Five days later, Zhang Liang arrived even earlier, but the old man was sitting there again. Zhang Liang persisted, and in another five days, slept overnight on the bridge. The old man came shortly after midnight and was impressed. He gave Zhang Liang a book, now known as *The Military Strategies of the Yellow Rock Old Man*, and told him that ten years later the world will be in chaos, and Zhang Liang will use the knowledge from this book to bring peace to the world.

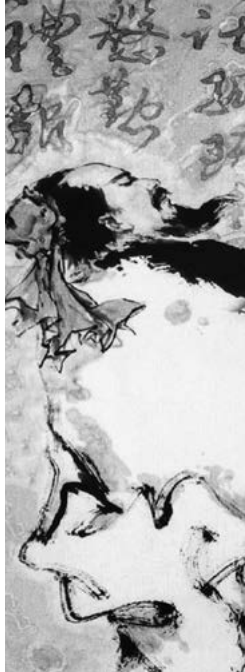
Years later, Zhang Liang became the chief strategist that helped found the Han Dynasty 206 BCE–220 CE, an empire that lasted over 400 years and is widely regarded as a golden era of peace and prosperity.



MANIFESTATION *Kong Ming*

The card of Kong Ming is one of the most powerful cards in the system. Kong Ming was an inventor, philosopher, writer, military strategist, politician, and a man who seemed to master everything he ever put his mind to. Encountering this card symbolizes your ability to manifest anything your heart desires. These desires can be mental, physical, emotional, or spiritual. Your power comes from a profound connection with the highest wisdom accompanied by unique talents and skills.

Your creativity is at its peak now. Use it wisely. Realize that all of your ideas and plans are a collection of experiences of multiple lifetimes. The period of preparation is over and procrastination is behind you. Believe in your abilities, in your knowledge and resourcefulness, in creating magical experiences from heavenly inspirations. Apparent mistakes,



however serious, will turn out to be the most direct path to success.

Drawing this card signals that materialization has already started. It is a positive omen. Do not doubt yourself or question your motives. Prioritize your goals. Create new tools to meet your needs; forge new relationships to build the necessary bridges. You are living the divine plan.

BACKGROUND

Kong Ming lived during the Three Kingdoms era in China 220 CE–280 CE, and was regarded as a genius, as well as the greatest and most accomplished strategist of his time. He was also known as an inventor and a Taoist magician, capable of predicting world events and foretelling every move of his opponents. Though later scholars have disputed his use of magic, Kong Ming's ability to foresee the future was widely recognized in both literature and historical annals.

Kong Ming was prime minister of the Kingdom of Shu at the time and was well known as an enlightened leader and smooth politician, capable of debating his opponents to utter silence. His famous expedition against the barbaric southern tribes led to the celebrated story of how he captured then released the enemy leader

seven times, achieving a lasting and undisputed surrender.

Kong Ming invented an early version of the land mine and a moving ox made of wood, powered by a mysterious source of energy. He's also credited with inventing the *zhuge nu*, a rapid-fire crossbow that resembled an automatic rifle, and the *kong ming* lantern, an early version of the hot air balloon.

He was often seen with a magical fan in hand, a gift from his beloved wife.



慈



COMPASSION *Guan Yin*

Guan Yin symbolizes serenity, sensitivity, wisdom, and understanding. She appears because you need to pause and listen to your inner voice. Your heart may be heavy, but your inner knowledge understands the key to softening it.

Give Guan Yin your sorrows and worries. Release your physical, emotional, and spiritual burdens. Allow her to heal you and ask for her guidance to ease the pain that others have caused you, and that perhaps you have caused in others.

The heart of Guan Yin holds compassion, love, and empathy. Find the will to connect with her teachings. Sense the agony of others, reach out to soothe and comfort those in pain. Embrace mercy and compassion, and listen to what they need. Bring the protection and the non-judgmental, unconditional love of this all-powerful deity to those you care for.



In helping others endure their suffering, your own pain will also find resolution. Your intuition and sensitivity is adequate to achieve the work of the healer.

By following the footsteps of Guan Yin, you will embody her power manifested into your own strength. Her spiritual insight and unique wisdom will guide you and awaken your potential.

Guan Yin is also a guardian of children. Legend says that she grants children to hopeful parents. She is the spiritual mother of all children on earth and in heaven. She blesses your marriage, family and home.

Guan Yin can also resemble the energy of your earth mother. Tap into Guan Yin's intuition through meditation or reflection by the water. She is associated with the healing power of water. Yin water, such as a pond, brook, lake, river, or waterfall, or even an indoor fountain, would be suitable.

BACKGROUND

Guan Yin, the bodhisattva of compassion, is revered in Buddhism, Taoism, and Chinese folklore alike. Her name, Guan, means to observe, watch, or monitor; Yin means sounds of those who suffer. Literally translated, it means “Observing the cries of the world.”

It was said that Guan Yin, through great love and sacrifice in life, had earned the right to enlightenment after death. But, while standing before nirvana, she heard a cry of anguish from the world below. She turned back to the world, renounced her reward of eternal bliss, and in its place, found immortality in the hearts of the suffering.

Guan Yin did not attain complete enlightenment but intentionally remained in the worldly realms to relieve the sufferings of mankind. She could assume any form, including a deity with a thousand arms and eyes, and has the power to fight demons, heal illnesses, prevent disasters, grant children, and change the course of fate. She is often represented as a beautiful, white-robed woman personifying compassion and kindness.



ABUNDANCE *Wang Mu*

The card of the Queen Mother describes abundance, resourcefulness, prosperity, success, family, children, and beloved animals. The Queen Mother is the supreme female deity — while her unconditional love and caring for mankind is blunt and unyielding, she wields her authority like a strict mother or guardian to bring stability to your world.

Wang Mu's power will awaken a sense of intuition, encouraging your true potential to reveal itself and allowing your calling for a higher purpose to become clear to you. The inner voice you have been hearing is her gentle push for you to move on and realize your dreams.

Wang Mu's unyielding power will assist in manifesting your wishes and guiding you to do whatever your heart wants to do. She ensures that all will be well.



This is a “yes” card. It doesn’t matter what situation you are facing. You will get there. Nothing will stop you. She will remove any obstacles and negative energies for you to achieve. Unlike Kong Ming, who is manifesting himself, and perhaps does it for you, Wang Mu pushes you and makes sure you can be successful. You do your share, and she will do hers to make things happen and to bring your efforts to fruition.

Wang Mu is a driving force urging you to get to where you want to be. She is a doer, easing your pains by action, healing your physical body, and helping you to organize and prioritize one thing at a time. She supports any project that shows your effort and vision. But beware, Wang Mu is ruthless. She doesn’t have patience for laziness, procrastination, or finding excuses not to try your best. Tuck your emotions away, get things done, and be realistic.

The Queen Mother’s protection is directly related to physical nourishment, like energy work and exercise, uninterrupted sleep, responsible diet, and strong metabolism. Now is the time to bear new life or new ideas. Follow the urge to live a healthy lifestyle, especially when you play the role of Queen Mother to those whom you love.

Abundance is approaching along with success. Bring the family together to savor in peace and harmony, especially at a time of harvest. Be generous to others. The cycle of giving and receiving is divinely orchestrated. The more you give, the more you will receive.

It is also a time to nurture yourself and bring the elements of nature close to you, including oceans, forests, mountains, wide open fields, rocks, and minerals. Replenish your energy, focus on your ambitions, and remain grounded. Delegate your work to others. Look at the big picture, and allow the people who work for you to take responsibility. There is no need to micromanage.

Wang Mu loves her daughters, and she gives women strength. She protects marriage and children, and she doesn't like unfairness. She especially watches over those who are "underdogs." If a person wants to know the outcome of a situation in which she or he is an underdog, Wang Mu will come to his or her aid to take care of the matter. She is an especially tough judge, a female Di Ren Jie, who enforces the fairness of all relationships. She could represent your earthly mother or grandmother.

BACKGROUND

The Queen Mother, also known as Wang Mu Niang Niang, is the goddess of life and immortality. She is described as one of the highest deities who attained immortality and celestial powers. She lives in a palace on Mount Kunlun and she has a garden of longevity peaches that ripen every 3,000 years. From these peaches, she creates an elixir that can make someone immortal.

The Queen Mother controls the cosmic forces of time and space. She possesses the power to create and destroy; she ordains life and death, disease and healing; she determines the life spans of all living beings. She presides over the dead and the afterlife, and confers divine realization and immortality to those who seek them.

Wang Mu has many daughters. She is a fair mother to all her children, no matter who they are and how much or little they achieved.

LEADER *Jade Emperor*

If you draw the card of the Jade Emperor, you have called upon the most dominant god of Taoism to guard your family and children, as well as your physical, intellectual, and psychological well-being. The Jade Emperor guides us to change the world with our natural drive and ambition. Value your work and harness that power. Maintain awareness, within yourself, of the mistakes you make and observe those around you.

The Jade Emperor grants the power to dispel negative forces in your path and leads you to success. He will clear roadblocks and stagnant energy, and he will shoot down demonic forces before you. The white horse will bring you to the spiritual truth.

Jade Emperor is about power: when he shows up, it means business, action. There is no need to contemplate more, and there is no mercy for wrongdoing. You pay for what you have done. You have the power and wisdom to get things done.



You should act quickly because all preparation has been well conceived and accomplished. Now is the time to execute the plan. Move away from those emotions that weigh you down. Cut the cord, but keep in mind that even visionaries can't change fate and the effects of karma. It's okay to not reveal your true feelings. We know deep down, you have as compassionate a heart as Guan Yin.

Jade Emperor is a lucky sign for any pursuit. Your love or relationships will be harmonized, and financial stability will not be an issue. Welcome your prosperity in any of its forms.

Create your blueprint with clarity and logic. Pay attention to guidelines, organization and reasoning. Be firm and fair. If you channel the Jade Emperor, you are also called upon to protect the underdog, to be generous to others, to safeguard and inspire others. You are called upon for leadership. In doing so, the Jade Emperor will also protect and inspire you.

The Jade Emperor can represent a deceased loved male guardian, your father, or grandfather. The Jade Emperor can also indicate your boss, or any authoritative figure. He protects your physical well-being and sense of security.

The path you're on is the way. Don't look back. Even if mistakes were made, they're part of the plan. Prevent distractions from slowing your current momentum and remain on target.

BACKGROUND

The Jade Emperor is the ruler of heaven, hell, and the mortal realms in between. He is considered one of the most powerful gods in Taoist mythology.

Once upon a time, when the world was a very harsh place and humans were struggling to exist, the Jade Emperor was just an immortal helping mankind survive. Although aggressive demons were roaming the land, he could do nothing to stop them, so he withdrew to cultivate the Tao, passing 3,200 trials and becoming very powerful.

When he re-emerged, he learned that an evil entity with the ambition to conquer the gods in heaven and the immortals below had recruited an army of demons and a war was raging in full force. The gods were being decimated.

The Jade Emperor rallied the immortals and led them against the demon. A long

battle ensued, toppling the mountains and shaking the seas. Eventually, the Jade Emperor and his followers defeated the demon and ended the war. Afterward, the gods, immortals, and humans declared the Jade Emperor as the supreme sovereign of the world.



SAGE *Lu Dong Bin*

Lu Dong Bin is a teacher of worlds, both spiritual and physical. He was a man of humility and humor, a supreme teacher who inspired others with both his personal experiences and divine wisdom. Unlike the Jade Emperor, Lu Dong Bin does not carry the energy of an overpowering commander, but rather that of a friend and confidant who can quickly and naturally alter the will of men.

Encountering the card of Lu Dong Bin means that fate has chosen you to learn from your life and the lives of those who are around you. Regardless of blessings and hurdles, of pain and pleasure, you will be able to welcome them with an alternate perspective, and perhaps take on the journey as a sage.

Be flexible and never give up because you will reach your destination. You may enjoy this journey, even if it changes course because your understanding of things has changed.



Acknowledge the urge of wanting to know more. You drew this card because one of your life's purposes is to learn and teach. Use sincerity and simplicity to reach others. A teacher is someone who was given a vision, who has something they are dying to express. This card coming to you is not a mistake. You possess both active and latent gifts as a teacher, healer, or counselor.

The road may not be easy, but you will get there, if not via this current path, then via other paths. It is important to travel through many facets of human existence to seek truth and knowledge. The rewards will outweigh the difficulties of the complex voyage. You will become a teacher for others, but also a teacher for yourself. With each mistake and accomplishment, you teach yourself to become wiser.

Enjoy life and live to the fullest what your fate and passion have led you to do — just make sure you don't cross the threshold of excess. You execute the exact order of the cause and effect of karma. You will find the best solution to your quest; don't be afraid to be ambitious. Learn by observation and by doing.

Lu Dong Bin also brings you messages from the spirit world. Your deceased loved ones, including cherished animals, are sending you love. They are smiling from

above. No space or time can separate you from them. People who are together in a lifetime share a destiny, and karma does not end with departure from the physical body. Closure allows those who have departed and those who are left behind to move forward in peace.

BACKGROUND

Lu Dong Bin is the most famous of the Eight Immortals. He carries a magical double-edged sword used to fight demons, and he has the power of invisibility. He is known to carry powerful herbal concoctions in his gourd to cure the diseases of mankind, and he is also honored as a scholar. One day, at an early age, Lu Dong Bin was cooking a pot of millet when an old man appeared and offered him a pillow to take a nap on. Seeing that the millet would take some time to cook, Lu Dong Bin slept on the pillow and had a long dream. In the dream, he passed a civil service exam, rose to fame, and married a beautiful woman. He had many children. Then, later in the dream, he was accused of crimes, lost his official position and wealth, was betrayed by his wife, and saw some of his children die. He awakened to realize that he had lived an entire life, one where he rose to fame

and descended to poverty, and his millet was not yet cooked. He decided to follow a different approach, one detached from the mundane cycles of joy and sorrow, suffering and pleasure, and committed to following the old man down the path of the Tao. Instead of fighting the destiny that he dreamed about, he welcomed the life experiences that the alternate perspective provided. Through the cultivation of the Tao, he eventually became an immortal.



LOVERS & PARTNERSHIP *Xi Shi*

You are in an atmosphere of love. Passion will shape your reality. You must love yourself to truly love others. You are a dreamer. You can feel that your lover is coming. But, you have to leave behind the old, dysfunctional relationship to make way for the new!

Channel the spirit of Xi Shi and come to understand that two people, if destined for one other, regardless of natural or societal barriers, will still find each other. Duty and honor, sacrifice and suffering, cannot stand between two people who are meant to be together. A profound love relationship is being manifested and you are the owner of that relationship.

Enduring romantic partnerships require patience and understanding. It can mean that love is not yet present but is on its way. Attempting to possess others will only result in losing them, while enabling freedom can secure a lasting relationship.



Yet, destiny will pass by those who fail to embrace tolerance, effort, and hard work. Create the atmosphere for love. Strive to understand each other and make no assumptions.

No one in love really sees clearly. Perhaps you are at a crossroads; perhaps you are overwhelmed by choices. Allow yourself time to reach a clear conclusion instead of succumbing to hasty actions that you may later regret. Those afraid of loneliness are vulnerable to impulsive decisions.

Affection, infatuation, passion, or lust can hide behind the word “love.” Your heart and head may not agree, but your gut reaction can be your compass. Respect and honor yourself.

When you encounter failed love, it is not you who failed. This had to happen for you to grow and mature, and become ready for the next relationship. Appreciate what the experience has given you; perhaps this is what you were meant to receive.

Express your feelings and bring your lover closer through music and art. Your passion and creativity are at their peak.

This card also indicates a great partnership. Your cooperation with people is benefiting everyone. It implies successful social networking and good relationships among friends, peers, and family members. If you are seeking a business partnership, it is a good omen. Entrepreneurship, trustworthiness, and long-term bonds are indicated.

You have many choices, let your intuition guide you to the right place.

BACKGROUND

Xi Shi was considered the most beautiful of the Four Beauties of ancient China. She was so beautiful that, according to a Chinese saying, “moon and flowers felt embarrassed, fish sink in the water in shame and the geese fall from the sky in awe.” Xi Shi lived during the end of the Spring and Autumn Period. At that time, the Kingdom of Yue was annihilated by the Kingdom of Wu, and the King of Yue was imprisoned and humbled before being released. The King of Yue plotted his revenge. His prime minister Fan Li asked Xi Shi to sacrifice herself for her kingdom. She was subsequently sent to seduce the King of Wu.

The enemy king was so bewitched by Xi Shi's beauty that he forgot all about his state affairs, and even killed his best advisor at her suggestion. The strength of the Wu Kingdom faded, and the King of Yue invaded shortly afterward. When the Kingdom of Wu fell, Fan Li and Xi Shi left the politics of mankind and fled together on a boat on Taihu Lake. No one ever saw them again.

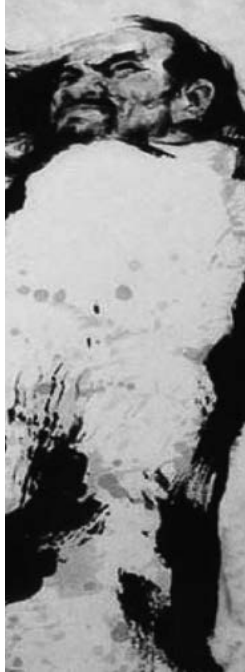


MASTER *Zhang San Feng*

The power of the universe is unlimited. Your energy is not. Blend your will with the forces of nature and utilize a boundless source of strength to overcome your personal, financial, and relationship challenges.

Zhang San Feng was a martial artist and healer who promoted a lifestyle that conformed to nature. He created a system that embodies supreme efficiency, deflecting superior forces with minimal effort.

When facing a problem, flow with the current, understand the natural dynamics of the situation, consider every component behind an obstacle, and you may resolve the issue without exerting yourself. Often, it's not what you must do, it's what you must not do. By using the forces already available to you, you may yet redirect a thousand pounds with four ounces of



energy. There is no obstacle too formidable to evade, no force too powerful to redirect.

Avoid confrontation and walk away if necessary. Wait for the right moment to act.

This card is about energy work and the healing arts. Never underestimate the strength of your mind. You are halfway healed when you believe you will be healed. Through meditation and reflection, you learn to work with your mind. You must use your mind to control *chi*, the vital energy flowing through all existence. By maintaining the healthy state of *chi*, the body may be free from disease. When you understand the characteristics of *chi*, you will comprehend the effectiveness of the energy work that Zhang San Feng is known for.

Cultivate tai chi, qi gong, or dao yin to prevent disease and aid healing. Introduce natural remedies, nutrition, and moderate exercise into your life, so that you can maintain your vibrant *chi* of the physical body and bring efficiency to your purpose. Find the strength to persevere with any regimen or schedule. Persistence is key. A Chinese proverb says, “A constant rain drop can penetrate any rock.”

BACKGROUND

Zhang San Feng was a Taoist martial arts master, and according to legend, was best known for originating the concepts behind *nei jia*, or internal martial arts. He was the founder of the Wu Dang martial arts system, of which tai chi became most popular, and he was famous for his theory of using less to conquer more.

Zhang San Feng is said to have been born at the end of the Song Dynasty 960 CE–1279 CE, but records of his appearance in the subsequent Yuan and Ming dynasties have led to popular belief that he lived well over 200 years. He began his martial arts training in the Shaolin temple and held a government position as a young man. Later, he left his official position and any aspirations for fame and fortune and traveled to Mount Wu Dang. There, he developed his unique martial arts system, *tai chi*, known for using calm against action, soft against hard, and slow against fast. Zhang San Feng was a writer and poet as well as a Taoist healer. Many of his writings have been preserved and are available today.



STRENGTH *Nu Wa*

Nu Wa is the embodiment of strength — especially emotional strength of reaching inside and finding the grit and the wisdom to accomplish the impossible.

Encountering the card of Nu Wa means that you do have the power and capability to achieve something monumental. Don't let your emotional distress blind you. Things aren't as bad as you feared. Believe you can do this. Nu Wa's story is here to inspire you to find extraordinary solutions. Externally, you may not seem forceful, yet appearing gentle and reserved doesn't mean you don't have the fortitude to move a mountain. You can use gentle force to accomplish stupendous feats and remain balanced.

Patience, grace, and calmness will allow you to succeed where brute force cannot. Being underestimated by your opponents will provide you with a decided advantage.



Be aware of the powerful yang energy inside you, where virility, potency, and sexuality are perfectly contained in the natural expression of your external yin.

Nu Wa is a reminder that when victory is in sight, no matter how disappointed or discouraged you may be, your last ounce of adrenaline can push you to the finish line. You have the inner strength. At this point, even thinking of giving up is foolish. You can finish, and finish well.

This card also instructs you to work intelligently. Pause if you need to and give time for your true strength and wisdom to surface. Or, perhaps, do something completely unexpected. When your mind is free from stress and pressure, it releases a remarkable force capable of conquering the impossible.

This card may also indicate that something is not realistic. Your expectations may surpass reasonable limits. You should revise your plan and then continue. Sometimes the problem is not that the task is too big to finish, it is that your energy is too scattered to focus on the task. You may need to overcome confusion in your own mind about what you want to achieve. Once you have decided and committed yourself to it, don't look back.

BACKGROUND

Nu Wa was a goddess of Chinese mythology who was known for repairing the Wall of Heaven. The collapse of the Wall of Heaven meant absolute catastrophe to the world.

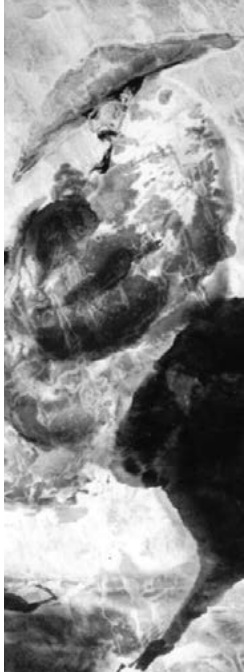
Once upon a time, there was a quarrel between two powerful gods, and they decided to settle it with a fight. When one god saw that he was losing, he smashed his head against a pillar holding up the sky. The pillar collapsed and caused the sky to tilt toward the northwest and the earth to shift to the southeast. Instantly, unending fires, vast floods, and the appearance of man-eating beasts devastated the world. Nu Wa severed the legs of a giant tortoise and replaced the fallen pillar. She handmade stones from earth, fire, and water with heavenly inspirations and repaired the broken sky with the stones of seven different colors. Nowadays, we see rainbows with seven colors because of the stones. But Nu Wa was unable to fix the tilted sky. This explains why the sun, moon, and stars move toward the northwest, and the rivers in China flow southeast.



WALK AWAY *Tao Yuan Ming*

You have been tired lately. Unnecessary burdens will lead to fatigue. Empathy and passion, if in excess, will lead to worry. The Tao Yuan Ming card advises you to detach yourself from mundane impediments and follow the flow of the universe. It is a good time to let go. Withdraw from aggravating situations and rise above the pettiness of the world, enjoying enlightenment and freedom as you do so. Despite believing that each day's sacrifice is for a higher purpose, at some point you will need to stop and reconnect with the earth. A rapid daily tempo, regardless of fortune and success, is stressful. Your sensitivity is better nurtured and developed in a purer environment.

That sensitivity exposes you to being easily hurt. Find exactly what makes your soul happy and walk away to purify your mind and body. It may look to others like you are giving in, but you are cultivating answers and starting to understand why



things happened the way they did. In so doing, you join the Taoist way to achieve harmony and peace. From that point on, you will know what to do and move forward confidently. It doesn't matter then what's going to happen. Everything is in the same rhythm as the pace of the universe. You are bound to succeed. Any setback is only temporary.

Your spiritual life has put you on a different path of learning, one achieved through a quest. Detaching yourself will provide an opportunity to reflect, and you can view from a different perspective all that has happened in life. A little solitude will allow you time to contemplate past experiences and hence understand more what your higher purpose is.

This can apply to any situation. For example, you may benefit from backing out of a contract, a toxic marriage, or a physical move to a new residence or place of employment.

This card also encourages you to write. Your amazing experiences should be captured in any written form and may one day, much like Tao Yuan Ming's writings, become a gift to the world.

BACKGROUND

Tao Yuan Ming, a famous hermit and recluse, was a scholar and poet born in the Six Dynasties period 222 CE–589 CE in China. His family was poor but well educated. His mother died when he was very young. He began his career as a government official, both civil and military, serving over ten years. After becoming disgusted with the corruption and infighting of the court he left to become a recluse. He married, had children, and pursued a quiet life as a farmer.

Tao Yuan Ming's poems often followed a theme that urged his readers to assume a life of hermitage, moving to the country and cultivating life with nature. His poetry projected humanity and personal vulnerability while avoiding the patronizing style of his contemporaries or exaggerating the virtues of reclusion. He was a realist about daily life and its hardships, but also apologetic and romantic in his struggles to become worthy of the sages of the past. He became famous for his back-to-basics lifestyle while his works achieved lasting fame among poets and scholars for centuries to come. By the Tang Dynasty, Tao Yuan Ming was elevated to greatness and regarded as a poet's poet.



THE WAY *Lao Zi*

To encounter the card of Lao Zi bodes well. But if you understand Lao Zi's teachings, then it becomes clear that "well" is merely a position in the cycle (like the endlessly spinning hands of a clock), a very temporary position that can quickly move to "poor." And the position of "poor" coexisting in the same cycle, can also quickly move to "well."

No one can choose how many cycles may be encountered in a lifetime, and most of us cannot see how long each cycle will last. But we do patiently wait for each rainy season to end each spring, or each heat wave to bid summer farewell. With every cycle in life, good or bad, we can quote the famous biblical saying, "This too shall pass."

This card tells you that you are in the right place and the right time. You have reached this desirable position, and all is well. Although you cannot change the cause of the wheel, you can



impact the results by your constant awareness. Free will is not dominant but nevertheless influential in deciding our fates. It may be impossible to avoid a cold winter, but we are able to prepare our living quarters so we can stay warm. Our efforts can smooth the biting extremes of high and low, help us avoid the roller coaster effect, and enable us to stay in a balanced state. This is the way. If you believe the way will lead you to eventual peace, the method of arrival no longer matters.

Enjoy your good fortune because luck will soon be changing. If you are on the top of the cycle, it's time to prepare for an inevitable decline. With humility, moderation, and generosity, you can cushion the fall and experience a lighter drop. The upward swing may be just around the corner. Strategize your next pursuits when in bad times. Planning your achievements during good times would be too late.

Don't be disappointed if you are at the bottom of the cycle because the turning point is at hand. It's an optimal moment to make necessary changes to release old, obsolete behaviors and patterns. Change your lifestyle, visit old friends, prioritize your schedule, finish your once passionate project, and stop procrastinating. Believe in miracles. Don't expend energy in wasted efforts. Wait for the wheel to turn and the right time to act.

Lao Zi can also represent your earth father, either deceased or living. This card is a message of guidance, love, or karma from him.

BACKGROUND

Lao Zi, simply translated as “old man,” lived during the sixth century BCE and is credited with writing the seminal Taoist work, the *Tao Te Ching*.

Little is known of his life or his true name, but tradition says he was a native of Chu, a southern state in the Zhou Dynasty. In his early years, he served as a keeper of archival records at the court of Zhou. Confucius 551 BCE–479 BCE had consulted him in the imperial library on certain ritual matters, and praised him lavishly afterward.

Eventually, Lao Zi became tired of the politics of mankind and resigned from his post. He began his quest by traveling west on his water buffalo toward the vast desert. At the westernmost gate, a guard convinced Lao Zi to write down his wisdom before disappearing forever. Lao Zi wrote the *Tao Te Ching*, gave it to the guard as a gift, and rode into the desert. The *Tao Te Ching* became the cornerstone of Taoist philosophy.



JUSTICE *Di Ren Jie*

A Taoist sage once said, “If you assume you can have good without evil, right without wrong, order without turmoil, you understand nothing about the laws of the universe.” Justice, whether delivering or receiving, is a reminder that although black and white or true and false may appear to be polar opposites, they remain inseparable and in harmony.

If you got yourself into an unintentional karmic tangle, or fell into the trap of excessive material greed, this may be the time to pay what's due. If you are a victim of others' wrongs, this is the time for you to gain justice. Once the karmic debt has been paid, you can move forward with freedom and renewed force. For example, if someone has hurt you, instead of getting revenge, trust the universe to take care of it. In this way, you will owe nothing and instead be repaid tenfold.



If you've chosen the Di Ren Jie card of justice and you find yourself in a position to judge others, it is important to understand that judging others is foremost a test of your own integrity. If you are facing a situation where justice is called for, be confident that the laws of cause and effect cannot be avoided. Remain detached from anger and ego, and the universe will execute its precise order.

When confronting contention, always proceed with dignity and find repulsion in thoughts of greed. The card of Di Ren Jie advises you to understand the dynamics of the situation, the people involved, and the pros and cons of each option. If you want to win, prepare to adjust your expectations of what others will do for you as you would do for others. Remain vigilant of administrative matters, avoid procrastinating, and plan ahead.

Conflicts may not always result in something you deem fair. Know that fair and unfair must coexist, as yin and yang must coexist and interact in order to eventually reach oneness. Trust that there is a universal order determining what form justice will take, and for a soul to grow and fulfill its purpose, one must understand that cause and effect is not always delivered in a form that is instantly

recognizable. With patience and vision, it is possible to understand the true intent of the outcome — it may yet be a precious gift from the universe.

BACKGROUND

Di Ren Jie, 630 CE–700 CE also known as Judge Di, was an official of the Tang Dynasty as well as the Zhou Dynasty under Empress Wu. He was chancellor during her brutal reign, and through his humanity and sense of justice, was credited with changing the face of the empire to efficiency and honesty.

Di Ren Jie was a detective, a judge, and finally, a chancellor to the first and only female emperor in Chinese history. He rooted out corruption and restored integrity to the court. He led military excursions as well as disaster relief, and was held in the highest regard by the people, and eventually, by the emperor. The criminal cases that he presided over as judge and magistrate became popular in later mystery novels.

When Judge Di passed away, the empress felt that everything was empty without him.



CHANGE OF DIRECTION *Royal Uncle Cao*

You've reached a point of knowing that drastic change may be inevitable. Allow the trigger, either internal or external, to help you ponder all that has occurred. Change your direction. It's a waste of energy to linger on matters proven impossible. Those who tread a repetitive routine, following a monotonous pattern of tediousness day in and day out, will be confronted with hard questions. Am I on the right path? Am I living my purpose?

The card of Royal Uncle Cao (also known as Cao Guo Jiu) is asking you to contemplate and meditate upon your life thus far, and you may find that you've been spending your time defending, protecting, and prolonging an illusion. It's important to understand that the illusion has maintained your drive all this time, and that it was part of your growth. But now your higher calling is pulling you in a different direction. Do not run from change. Do not be afraid of change.



If you can't decide what that change is, step back from it, do nothing, and nothing will be left undone.

You can observe the change as a third person. When you are no longer in the foreground, you can see things clearly, and with careful planning, you will take the right direction.

Sometimes it's clear that certain things you want changed cannot be altered. It's perhaps a sign of something else that requires correction. It can be a place to live, a new environment in which to work, or a whole group of friends to share your new visions. Once you embrace this change, you need to fully commit to the course of action. Sometimes, the change impacts more than one person, and you need to understand the big picture before taking action.

This is also a golden time to purify your physical body, whether in activity or in rest. It is a time to re-examine what you put into your body, and what kind of people you surround it with.

BACKGROUND

Cao Guo Jiu, known as Royal Uncle Cao, is one of the Eight Immortals. He was a shy man of noble birth, possessing both wealth and power, which came with his nobility. His younger brother was an immoral man who abused his position of power, once murdering a scholar so that he could seize the man's wife, and then he eventually murdered her as well. After Cao Guo Jiu played a role in the trial and execution of his brother, he became disgusted with his own noble lineage and the corruption that came with its privileged status. There was an internal urge for him to change, to do something different, to take his life in a new direction. The Royal Uncle took the bold step of leaving his comfortable existence.

For years, he spent his days pondering the world, purifying his body, calming his mind and studying the Tao. Then one day, Lu Dong Bin and another immortal came to test his progress. They asked him, "What is the Tao?" Royal Uncle Cao pointed to the heavens. Then they asked, "Where is heaven?" He pointed to his heart and said, "Heart is heaven and heaven is Tao."



TRANSFORMATION *Bian*

Every crisis is an opportunity to learn and grow, to act upon a higher plane of understanding. Your unsettled feeling is a signal of a profound transformation. Every ending is a new beginning.

The point of transformation is like reaching the very darkest hour of the night, or the very coldest day of winter. From here, it can only get brighter, and it can only get warmer. Taoists view an end as the natural transition to a beginning. A force that has exhausted itself must end in order to regenerate.

The card of transformation strikes like thunder. Everyone will go through this extensive process of transformation at some point, and it can only result in renewed awareness. Claim this loss, and be willing to embrace departure and conclusion. Recognize the signs of change and embrace it. Positive results are ensured.



A little caterpillar can only see a small area around itself. Its worldview is small, so it feels big in comparison. Yet, when metamorphosis is attained, the organism in its entirety will inevitably change. After growing and flying to a higher plateau, the butterfly may finally comprehend the grandeur of the world. Ultimately, it finds humility, and the journey will have been worthwhile.

Now is the time for physical cleansing, spiritual release, and severing ties. Liberation from old burdens and false conformities are your next steps. Focus on grief and you will only prolong the ending. For something new to come, you must truly let go. Call upon Guan Yin, the Queen Mother, and the Jade Emperor to dispose of unhealthy thoughts and stagnant energies, including guilt, sorrow, regret, and disappointment. Connect with Zhang Liang for a fresh start and new life begins from here.



BALANCE *Immortal Woman He*

It's fortunate to encounter the card of the Immortal Woman He. Her power to establish harmony in any situation is assisting you with your quest in life.

Immortal Woman He, also known as He Xian Gu, is about physical balance and emotional resonance. When you encounter an obstacle, understand that it is not related to bad luck but is more likely a result of imbalance. Balance is the lack of excess, the absence of dominance, and the freedom from control.

This card is a gentle reminder that you need to maintain balance to achieve emotional health and to free yourself from situations of great stress or anxiety. A perfect balance cannot be attained unless you see the world through your own eyes as well as through the eyes of others. Pride and ego must be



tamed by compassion and kindness. When things are balanced, you feel good.

When you are not struggling against headwinds, your spirit can be free, and only then can you hear the guidance from heaven and feel the effects of balance. Take action with inaction, cherish without being attached, and embrace the world without addiction and dependency.

Hard work, the courage to dream, the tenacity to toil — all these must be balanced by relaxation and leisure. Too much stress will lead to emotional collapse, while too much entertainment numbs your drive. Walk the middle ground to find balance.

The Immortal Woman card is also a call to align with nature. Contemplate in front of trees, meditate by water, synchronize your heartbeat to the voice of birds, and permit the magical powers of nature to teach you balance.

BACKGROUND

Immortal Woman He, also known as He Xian Gu, is the only female among the Eight Immortals. According to legend, she was born in the southern province

of Guangdong and lived during the reign of Empress Wu 690 CE–705 CE. As a young girl, He Xian Gu had a dream in which she was given a peach from the garden of the Queen Mother.

The following day, while out searching for herbs, she discovered that the road she knew so well had changed. The brook, the hills, and the bushes along the path were gone, replaced by tall pines, a huge valley, and sky-high cliffs. She quickly lost her way. Then, she saw an old man in a blue robe with a basket full of herbs and fruits. He Xian Gu asked him for directions. The old man took a peach from the basket and said, “You must be hungry after days of walking.” She ate the peach and suddenly, heavy rain poured down on her. She ran back to her village in the downpour and found herself completely dry, quickly realizing that she had run through the gaps in the rain instead of straight through.

She came home to find a month had passed, that she was surrounded by light, and that she possessed the power to heal. From that day on, she spent her days curing illnesses, helping people achieve bountiful harvests, and traveling across mountains to collect rare plants for medicine. Eventually, she ascended to

the heavens to join the other immortals. It is said that she chose not to become immortal at earlier times to bring balance and peace to mankind, and to build the bridge between mortal and immortal.

The old man who gave her the peach was the Taoist immortal Lu Dong Bin, who also taught her a breathing exercise used to balance internal *chi* (life force energy), still popular in China today.



TEMPTATION *Pitfall*

The temptation card is a sharp warning against permitting an inflated ego to turn foul, and a reminder that we can only correct our behavior if we are self-aware. Simply hiding emotions and desires will not make them disappear, and it is foolish and arrogant to believe that it will.

Thoughts and intentions banished from the mind remain influential, despite being dormant, and are dangerous when the mind is unaware that they are active. Proclaiming “the devil made me do it” is a sign of subconscious desires taking control. We can only address weaknesses that we are conscious of. We cannot always avoid the erroneous path if situations entice us into them. But the moment we realize the path leads to a dead end, it is in our power and will to turn around.



Physical and material temptations bring vulnerability to everyone.

Understand that they are there for a reason and avoid becoming enslaved. It is believed in Taoism that money, possessions, and material pleasures, if not enjoyed in moderation, will lead to misfortune.

There is a Chinese proverb that says, “Retreat a single step to see the broad sky and majestic ocean.” Take that step now so you can see the options. Walk out of the trap while you still can. Seek help and guidance.



SURRENDER *Xiang Yu*

The card of Xiang Yu is one of catastrophe and revelation, destruction and release, and ultimately, of surrender. There are moments in life when disaster strikes from behind, when opposing forces are too great to confront, and the situation is too dire to evade. Some things cannot be prevented. A firefly should not challenge the sun. Instead of fighting a battle you will never win, accept the losses and focus on recovery. Redirect your energy toward tomorrow.

This is also a moment of freedom and awakening. You are at the bottom of the cycle, and with surrender, you are free to start again elsewhere. It is important to understand the reason behind all that has happened. A life lesson learned is a gain, not a loss.

In Taoist thought, everything is but part of a cycle. When one



reaches the bottom, the next step can only be up. Though defeat and loss is difficult to acknowledge, honestly accepting your situation and remaining decisive and dignified while preserving goodwill can determine the success of the next phase. Proceed beyond your losses and reinvent yourself. Withdraw and refrain from making new decisions at this time. Seek counsel from teachers and mentors and wait for times to change.

This card is also a clear signal of being done. Your job is finished. The situation is over. Move on. There is no need for more hassle.

BACKGROUND

Xiang Yu, born in 232 BCE, was a conqueror during a period of turmoil in China. He was dominant in warfare, and was credited with overthrowing the first empire of China. He was also known for his courage and strength in battle, his iron will, and his sense of honor. He was viewed as a true hero by many in his time.

Xiang Yu's downfall came in 202 BCE, at the age of 30, when he kept his part of a peace agreement while his enemies reneged on theirs. He found himself

surrounded by enemy soldiers. His own troops came from the Kingdom of Chu, and they were tired and weary after years of war. The enemy had captured many citizens of Chu at the time, and they were forced to surround Xiang Yu's camp and sing the folk songs of Chu. The Chu soldiers thought of home when the singing reached their ears, and most of them deserted.

When Xiang Yu took his own life in the face of defeat, he was only left with 28 men. His death would guarantee the survival of these men, as the enemy would not pursue them if he were dead. That was his final act of heroism. His story has been told throughout history, including the classical Chinese opera *Farewell, My Concubine*.

After his defeat, the land was pacified and the Han Dynasty, which lasted over 400 years, was founded. The idiom “surrounded by songs of Chu” is now used metaphorically to describe a helpless and critical situation, surrounded by enemies on all sides.





LONGEVITY *Ma Gu*

The card of Ma Gu is auspicious. Now is the time to take a deep breath and enjoy the stars in the sky, reminding yourself that their cosmic energy is an affirmation of peace and tranquility. A change of luck is before you. Your hard-earned freedom came from heightened perception, and your mental clarity came from needed physical nourishment.

There are dark times in life, and yet, there are also auspicious times. Through determination and hard work, you have earned your upswing in the cycle of luck. Relish the elixir of Ma Gu: it offers cosmic blessing, good health, and longevity. Know that it is available to you, use it well, and cherish these times of surplus by engaging in a healthy lifestyle.

Take care of your body and maintain balance in your professional as well as personal life, keeping in mind the wellness of the physical being. It's a call for renewal after a



long stressful effort. Remain flexible and adaptable.

Explore the many options of maintaining good health, including the practice of meditation, qi gong, and tai chi to attain serenity and equilibrium. Social connections and uniting with nature, especially animals, gardens, and plants, can also help you to heal. With exercise and a balanced diet, you release stress to fully enjoy the vibrant life around you. Tune into the cosmic forces to bring heavenly healing to you and your loved ones.

You probably have been working hard for a long time. This card is a warning that if you don't take a break to care for your overall wellness, all the gains you have worked for will soon mean nothing. Make an exercise plan today and carry it through without hesitation. Break away from all addictions and procrastinations.

BACKGROUND

Ma Gu is the goddess of health and longevity. She was the daughter of a ruthless official of the Kingdom of Zhao. Her father was building the city walls with slaves, and he permitted them to sleep only when the roosters crowed at dawn, forcing them to be awake and working when the sun was visible on the horizon.

Ma Gu imitated the rooster's crow earlier in the night to help the slaves get more hours of sleep, and when her father found out, she was badly beaten. She ran away and was chased by her father's guards, and she was trapped at the edge of a cliff.

Ma Gu preferred to jump off the cliff rather than return to her brutal father. According to legend, the Queen Mother threw a thread of hair in front of the cliff, forming an enormous bridge, and saved her. Ma Gu escaped and traveled for nine days, arriving at a beautiful mountain full of peach orchards, where she settled down to cultivate the quietude of the Tao. There, she learned to make magical wine. On March 3rd of every lunar year, Ma Gu brought her best wine to the Queen Mother's birthday celebration to give thanks for saving her. This has become the famous ritual of Ma Gu offering longevity.





MOON *Chang Er*

This is the time when external forces incite things hidden in your subconscious, like a tide pushing suppressed emotions to the surface. Your intuition is at its highest and it bodes well to embrace it. The great energy of intuition has surfaced. Everyone has intuition. Some deny it, some fail to recognize it, but everyone can excite it. Trust your creativity and use your imagination well.

Chang Er is also about passion. The fire energy of love blending with the water energy of the moon not only promotes the emotion of happiness and the awareness of sexuality, it also levitates you to a heightened state of goodness.

This card can also suggest a confusing time. The Moon empowers the unknown, and anything unknown induces fear. Work to differentiate between illusion and reality. Don't make any decisions when your mind is cloudy. Walk the middle



ground to avoid drastic decisions that can lead to irreversible mistakes. Anything, either good or bad, can happen. Through your dreams, meditation, and psychic expression, you should reflect internally to work with those hidden emotions. Dive into the mystery inside you and use this unusual time to your advantage. Realize what you really want and enjoy the feeling of nothingness.

Encountering the card of Chang Er is also a sign of love and romance as well as artistic expression. It is a great time to create.

BACKGROUND

Chang Er was a beautiful palace maid in the mortal world. Life was normal for her until one day, ten suns suddenly emerged to scorch the earth, making it so hot that life was unbearable. The king frantically searched for a solution.

A young hero named Hou Yi appeared with bow and arrow and shot down nine suns. For his reward, he asked for Chang Er's hand in marriage. The king agreed, and the new couple lived happily together for some years.

Then one day, during a full moon, a mysterious old man gave Hou Yi an elixir

that would make him immortal. He was unsure whether he could leave his wife behind, so he left the elixir under the pillow, instructing Chang Er not to touch the liquid of immortality. It was not something to be taken lightly. Yet, Chang Er loved her life with Hou Yi so much that she wanted to live forever. For the same reason that Hou Yi did not take the elixir, Chang Er swallowed it without thinking. She instantly began to levitate. She tried to hold onto something but only managed to grab her pet rabbit. She rose to the moon, and has been there ever since. She is considered to be the guardian of the moon and its powers.

Today, during the autumn moon festival, people use lanterns to light up the earth so that Chang Er can see them, and they eat moon cakes in honor of her.





SUN *Innocence*

Victory is at hand. You can't miss. You have hit your target and reached your goal. The time has come when everything is going your way. All the years of hard work are going to pay off. It is truly a time to celebrate.

Reflect upon the past and permit the celebration to take on a new meaning. You are not celebrating a single event or achievement. You are celebrating a long, complex journey during which you have endured so much sacrifice, suffering, threats to your integrity, and challenges to your honor.

Commend the most important accomplishment of all: the acquisition of new realizations and new understandings, and taking another big step in the evolution of your soul. When your spirit reaches a higher level, cosmic forces seem to start working for you. What used to be out of reach is now possible, perhaps even easy.



Situations you used to find difficult can no longer deter you, because good fortune is before you. This is the time to share love and joy with the people around you, especially your immediate family. True abundance comes from sharing. This is also the time to honor those who have helped you through this long journey, and give thanks to those who have made sacrifices for your safe arrival. Continue to reach for peace and happiness. Teach and help those who have not yet arrived.

Be grateful and joyful. We are all children of heaven, no matter how old we are. Look at your world through the eyes of a child. It is really that simple; smile and everything is beautiful! Imagine you are a child again. Let the innocence of the child influence the way you act and think. Let natural intuition guide you to the next target. You are not alone, and you have been led all along. Keep up that connection and move forward with the same smile. When you're roaring with fire in victory and triumph, you need to find balance.

This card can represent a baby boy, a son, or a relationship between a father and son.

KARMA *Gui Fei & Yue Fei*

The cycle of cause and effect, known as karma, is the natural way of the universe and an eternal judgment of your actions. There is no justice or punishment or sentence. It just is.

What you are experiencing is a glimpse of karma. Karma is usually witnessed through a particular relationship, and it is especially complicated in a love relationship.

Karma is multidimensional and not for us to judge as good or bad. When an action is initiated there is always a reaction to it. Something else then responds to the initial result, and a chain reaction is set forth.

Something that brings positive results today may lead to disaster in the future. Today's wealth and comfort may breed future incompetence. Yet, tomorrow's disaster may lead to critical lessons learned, paving the way for future stardom. A



rise to stardom may lead to complacency, and an inevitable fall from grace. The cycles of karma are forever. It follows its own time and its own pace.

When contemplating cause and effect, it's important to understand that *effect*, or what happens to you, is half of the system. *Cause*, or the decisions you make, constitutes the other half. With karma, no one can be a hundred percent victim, nor a hundred percent aggressor.

Actions of the past cannot be changed. Effect will happen. But effect of the future is influenced by the decisions of today. We are always given a second chance, and it's more important than ever to exhibit kindness. In the complex cyclical web of chain reactions, we do have a chance, every day, to make the right decisions and create desired chain reactions for the future.

Forgive others and conclude the cycles of hate and vengeance. Repay your debt, redeem the wrong, and alter unwanted cycles. Love others and a beautiful new chain reaction will be in motion.

BACKGROUND

Yue Fei lived during a time when the Jin Empire was at war with the Song Dynasty. Yue Fei joined the army and became a general to defend the Song, and he was so successful in battle that he almost chased the enemy out of Song lands. However, court politics stood in the way of Yue Fei's victory.

Qin Hui, who was an influential member of the Song court, preferred negotiation with the Jurchen rather than war. He convinced the emperor to summon Yue Fei back to the capital. Upon his return, Yue Fei was arrested on false charges, imprisoned, and executed.

Yang Gui Fei was one of the four famous beauties of ancient China. She was the imperial consort of the great Tang Emperor Xuanzong. Yang Gui Fei was the daughter of a high official, and she was originally betrothed to the prince. But when the emperor saw her, he became so obsessed by her beauty that he took her as his royal concubine. Over the years, the emperor loved her madly. He neglected his duties and disregarded the discontent in the empire. The Tang Dynasty weakened, and a rebellion ensued.

Karma is a hand of cards in which the interconnectivity may be invisible, but lifetime after lifetime, the effect of one causes another. Yue Fei effectively defended a kingdom against invaders. His king however, mistrusted him and put him to death. Yue Fei's goodwill and loyalty to the king was met with grief. In another lifetime, Yang Gui Fei was the courtesan who brought an empire to its knees. The king, in her case, blindly gave up all reason and responsibility to spend time with her, causing the kingdom to nearly fall. Whether it was reincarnation manifested, or the actions of one lifetime simply rippling into another, the king of the courtesan's time reaped the downfall that the king of the general's time sowed. Each action begets a reaction, and there is no limit on time, space, or manifestation.

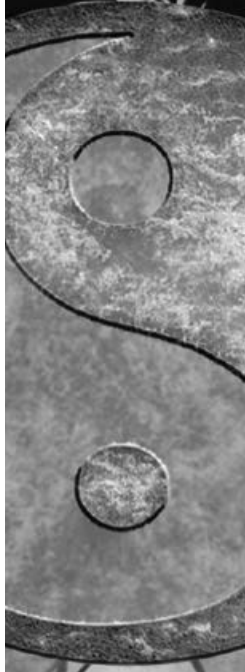


VICTORY *Ba Gua*

This is a time of advancement, both physically and spiritually. You will experience great joy, as though you are finally returning to your deeply missed home after a long, arduous journey.

Sometimes the journey through life is like walking through a never ending spiral. As you travel, you will find yourself in a new position, but not necessarily a better or worse one. Each step is closer to the center of the Ba Gua, closer to the Great Extreme, closer to oneness. You may find yourself repeating the cycle, returning to where you started from, and with each completion, you may ask the same questions: What is my goal? What is my purpose? Is my existence still relevant?

During this journey, you will encounter every combination of the Ba Gua, including joy, sorrow, accomplishment,



disappointment, pain, pleasure, life and death. The journey to the end of the Ba Gua will lead you to who you really are, your original, primal being.

There is no goal to achieve, because life is part of it. All the dreams, everything desired, have been part of the purpose all along. The card of the Ba Gua is an indication of spiritual maturity.

Deep inside, you do know the direction that is meant for you. You are following the footprints of past sages like Lao Zi, Immortal Woman He, Zhang San Feng and Guan Yin. Study their lives and advance with confidence. Confused emotions, self-doubt, fear of the unknown, or external influences have diluted the inner wisdom. Understand that where you're going is not as important as the journey. Take a step forward, and that step will bring you closer to oneness. Today's success will propel you into the next journey.

BACKGROUND

The Ba Gua is the representation of everything in the universe and the symbol of Taoist thought. In the beginning, there was a complete void. But the only way to recognize the existence of “nothing” is to compare it to “something.” This

something could not be defined as large, or long, or heavy, or strong, because there is no way of knowing what is large without comparing to what is small, or short, or light, or weak. Therefore, nothing and something must coexist as polar opposites, known as tai chi, or the “Great Extreme,” symbolized by the Yin Yang symbol in the center of the Ba Gua. The words Yin and Yang represent the two opposites.

Within Yin, there is Yin and Yang; and within Yang, there is Yin and Yang. When Yin is divided into Yin and Yang, and Yang is divided into Yin and Yang, there is a second level of dualities coexisting. Additional levels of dualities give rise to the Ba Gua, or the Eight Trigrams, and form the structure behind Taoist thinking. It is said that the unlimited combinations and changes within the Eight Trigrams can define all experiences in the world.



ELEMENTS

RELEASE | METAL *Yue Fei*

Metal symbolizes honor and courage. Metal is fearless. Its energy is straightforward, clean, and unyielding.

Metal energy represents enhanced mental acuity and strength, as well as solid budgeting and organization skills. It represents independence, focus, and a strong will to accomplish things.

Stand up for what you believe in and convince others of the righteousness of your beliefs. You don't need the approval of others to proceed. Once you reach a decision, move forward diligently and don't look back. Believe in yourself. Now is the time to act with confidence. Focus your energy on the most important matters and avoid becoming entangled in minor details.

This oracle is represented by Yue Fei, a national hero who displayed excessive metal characteristics. He was noble, straightforward, and honest, but also stubborn. He was a loyal general and he believed strongly that he could do no wrong.



He was unwilling to suspect that politicians could twist his situation to his disfavor. He was inflexible in accepting the cruel realities of the world and this eventually led to his downfall.

Learn to tell the difference between confidence and arrogance. Be careful to avoid being overly controlling or stubborn. Welcome other opinions and trust in the ability of others to do their jobs. Have the courage to see new opportunities and cut old ties that bind you to negative influences, unhealthy lifestyles, or toxic relationships. If you find it difficult to adapt to change, you may have too much metal. This may also indicate past life influences that you need to investigate. Step back to avoid confrontational situations, and reduce your metal element by surrounding yourself with nature, especially wood elements.

Having too little metal energy in one's system will lead to procrastination and indecisiveness. You may become taciturn or stingy, and you may lack confidence. Greed is another result of lack of metal. If you receive this oracle and these are your symptoms, increase the metal element in your life by utilizing the energy of autumn or the western direction. Bring the colors of white, gray, gold, or silver to your living quarters.

BACKGROUND

Yue Fei 1103 CE–1142 CE was a military general during the era of the Southern Song Dynasty. He was a warrior of immense skill and character, having never lost a battle, and once defeated an army of 500,000 with only 800 soldiers. His name has come to symbolize loyalty and patriotism in China.

Yue Fei lived during the time of the Jin Empire's repeated invasions into Song territory. Yue Fei joined the army to fight the Jin. He relentlessly hammered at the enemy and won every battle until he was close to chasing them out of Song lands. A Jin commander once remarked, "It is easier to shake Mount Tai than to shake Yue Fei's army."

But Qin Hui, who was a powerful member of the Song emperor's staff, was intent on settling with the Jin. He convinced the emperor to summon Yue Fei back to the capital. After twelve summons, Yue Fei returned to the capital. He was arrested on a trumped up charge, imprisoned, and executed. Much later, in 1163 CE, the Emperor Gao Zong exonerated Yue Fei. Today, temples and monuments that honor Yue Fei can be seen throughout China. People pray to his spirit for courage and good luck.



GROWTH | WOOD *Panda*

This card indicates progress, which benefits you physically, emotionally, and spiritually. The refreshed energy of the wood element arrives with the passing of winter and signifies fast growth. Encountering the wood card is a sign of good fortune. In Feng Shui, wood represents spring. It is associated with the direction east, both geographically and metaphorically. Geographically, pay attention to what is east of you. Metaphorically, it is a new period of your life cycle. Make good use of the new energy to accomplish what you must, because the opportunity will pass quickly.

People with ample wood energy often initialize new ventures. They are full of imagination, ambition, intuition, creativity, and flexibility. They are active and goal driven. When faced with multiple goals in life, it is important to focus and concentrate on the most important goal first. You must identify your priorities.



This card may foretell of oncoming competitions, both with others and with yourself. It can involve schoolwork, professional studies and certification, or exams. Do not rush forward blindly. Remain flexible, use the resources available, and try to achieve what you must without pressure. Growth is natural, not forced.

The card is associated with growing children, especially young adults, where conflict is an inevitable part of growth. You cannot exercise control over such conflicts, but you can be part of the growth and help guide them to resolution. This card might suggest that you break away from old habits and try to see beyond your surroundings.

Too much wood in an environment or in a person can promote a sense of being overwhelmed, creating tension, confusion and inflexibility. Being addicted to something or a certain way of doing things is an example of inflexibility. People who have extra wood energy can be extreme, stubborn, or over-competitive. Too little wood inhibits growth, impeding intuitive and creative flow. The emotions of anger, passiveness, jealousy and ungratefulness are associated with inadequate wood energy. Forests and gardens are great sources of wood energy. Green color represents wood.

INSPIRATION | WATER *Diao Chan*

The card of Diao Chan represents one of the fundamentally powerful elements in Taoism, water. This element signifies the direction north and the winter season.

Diao Chan was born by a mystical river, and it is said that the people living near the river all prospered for years afterward. Women, particularly those who remain gentle but powerful, are compared to water in Taoist philosophy — gentleness can overcome hardness, just as a river can erode a boulder into a pebble.

The water element nurtures life and creativity, especially music, art, and various forms of communication, including book writing and public speaking. Water is key to your intuitive senses. This card signifies your inherent or learned gift of seeing and knowing beyond this physical plane.



It is important now to bring water into your life, starting with basics such as drinking more water. Bodies and souls that are overworked require water energy to heal.

Spend time near rivers, lakes, and oceans. Energy work like massage, qi gong, tai chi, yoga and meditation are especially healing to you if you feel stressed, fatigued, or depressed.

Water is also a key ingredient in prosperity and growth. If you receive this oracle and you are concerned about your financial affairs, it confirms that prosperity is being manifested. Trust that you will be provided for and that prosperity comes in many forms. Identify what makes sense to you and grasp the opportunity.

This card also tells you to expect harmony in your relationships — platonic and romantic, personal and professional. Water nourishes sensuality and sparks in passion, resulting in free expression and clear articulation with your partner. This will allow that partnership to blossom. Pay attention to cultivate an important relationship because, if not, it could flow like water and end quickly.

When the body is water deprived it feels dry, old, and afraid. When water is

abundant, sleep is enhanced and diet is improved. You become supple and feel younger and more confident. However, excessive water could drown your spirit and dilute your concentration.

Place a water element at the entrance of your living space — a fountain, an aquarium, a bowl of water with some cut flowers, or simply some decoration in any shade of blue.

BACKGROUND

Diao Chan was one of the four famous beauties of ancient China who lived around the Three Kingdoms era 220 CE–280 CE. It was the end of the Han Dynasty and the country had been carved into different factions by multiple warlords. Diao Chan was a royal dancer and a singer.

It is said that once Diao Chan prayed to the moon, and the moon, upon seeing her visage, hid itself under some clouds in shyness and deference to her beauty. Using the power of this beauty, Diao Chan was later instrumental in bringing down a brutal warlord to begin the Three Kingdoms era.



NEW JOURNEY | FIRE *Mu Lan*

A new, well-prepared, auspicious journey is starting. Move on and don't look back. Everything will work out. Fire is direct; it represents yang and rising energy. Heat and warmth are the symbols of fire. Fire is the energy of summer and represents the southern direction.

The Mu Lan card is about courage and the right time for a new journey and a major change. It could be a change of location or a change in the way of doing things. It could also mean a purposeful journey from which you will return with a fresh view of yourself and of the world around you. Your body will be fully rejuvenated and many of your questions will be answered.

It is time to realize your dreams. This is also a new beginning card, but unlike Zhang Liang, it is a new venture that is well prepared. If you have considered and planned a new beginning, the right momentum and the perfect associates will appear.



This is a rare opportunity to take on an adventure and to self-sacrifice for something you feel is worthwhile and noble. Be careful of too much fire in the environment. It can amplify aggression, impatience, and impulsive behavior. People with too much fire can be egocentric; they enjoy showing off. Keep a close connection with the earth element, which not only grounds you but also helps you release the extra fire element.

Too little fire can foster emotional lows, poor self-esteem, isolation, and timidity. People with very little fire find it difficult to finish what they start. They feel discomfort around people, even around their own family. To bring good fire element to you, surround yourself with lively, positive people. The outdoors, animals, and the color red can also augment your fire element.

The card of Mu Lan also represents family and children. Mu Lan endured a ten-year war for the love of her father. Remember that family is still at the center of our existence. Love and appreciate your family, especially your parents. It doesn't matter what your parents did or didn't do for you; by understanding cause and effect, you will realize that the past actions of each parent, either perceived as good

or bad, produced the full-grown human being you are today. And if today you are raising a child, it is important to convey the hard lessons of diligence, discipline, and frugality to your young one.

BACKGROUND

The Ballad of Mu Lan chronicles the story of a young girl named Hua Mu Lan, whose ailing father was summoned for war. Since she had no older brother, she decided to take her father's place in the draft. She bought a horse, dressed herself as a man in full armor, and rode off at dawn, traveling thousands of miles and crossing mountain passes to confront the barbarian invaders. After a long, ten-year war, she returned to the capital and was received by the emperor. He wanted to recognize her for her military achievements, so he asked her what she wanted. She declined all government posts and simply wanted to go home.

She returned home with a number of guards who fought by her side for many years, and a massive celebration was waiting for her. She went into her room, changed back into her old clothes, and emerged as a woman. The guards were completely shocked. After so many years, no one ever knew she was a woman.



PROTECTION | EARTH *Mount Tai*

Mount Tai is solid — it is there, and no one can change it. Be calm and let the power of this earth element ground you. If a stressful situation is in front of you, the message here is not to panic, but to step back and give yourself breathing room. Remember that you have Mount Tai behind you. The unshakable mountain will provide strength at this time.

Sacred mountains and ancient forests are symbols of our ancestry in Taoism. Your ancestry from past generations is providing good karma to help you through this lifetime. This card also indicates that you may have past life connections with the people you are now encountering. You cannot change the fate, but being backed by Mount Tai, inevitable positive change of luck will soon materialize. Accept it and work toward the successful closure of that past linkage.



The earth element is central to the Taoist concept of heaven, earth and man. In Taoism, one has to connect with earth to truly be part of these three powers. Earth contains abundant calming energy and is associated with loyalty and prosperity. Mount Tai, as the most revered mountain, is the symbol of strength, solidity, and grounding. There is a famous Chinese saying, “Solid as Mount Tai.”

The well-balanced earth element enhances physical strength, reliability, stability, and industriousness. Earth also has nurturing, caring, and loving characteristics. People with adequate earth are resourceful and usually feel secure. Too much earth prevents you from defining clear boundaries, resulting in clutter, pensiveness, and negligence toward oneself. People who have too much earth can lack focus and be easily distracted. If you are overworked, tired, constantly worried, or surrounded by clutter, it is important to connect with wood energy to release any excessive earth.

Those lacking in the earth element are often confused or unfocused. It may lead to instability, laziness and selfishness. People lacking in earth can be illogical and frugal. You can increase the earth element by working in a garden, walking, or

hiking in nature, or introducing any shade of earth tones into your living space. Obtain a painting of a landscape prominently displaying a mountain scene or other earth formation. This element is associated with all seasons and the direction it represents is center.

BACKGROUND

Mount Tai (Taishan) is the most famous of the five Taoist sacred mountains of China. For thousands of years, it has been an important place for official state rituals, where emperors made annual trips to pay homage to heaven and earth. The first emperor of China held a grand ceremony on the peak of Mount Tai, known as the Jade Emperor Summit, to celebrate the unity of his empire. The Jade Emperor Summit, also known as the “Summit of Peace,” is the highest point on Mount Tai. It rises to a height of 1,545 meters above the surrounding plateau.

The Temple to the God of Taishan contains the Taoist masterpiece painting, “The God of Taishan Making a Journey” (circa 1009). There are also a number of ancient trees, including six cypresses planted 2,100 years ago during the Han Dynasty. This landscape, which includes 22 temples, 11 gates, 14 archways,

14 shrines, and four pavilions, is truly a wondrous sight. Each structure is arranged along a flight of 6,660 steps that stretch between the heaven and the earth and connect the natural elements in a delicate balance. Mount Tai was the main spiritual ceremonial center in Eastern China where rituals were performed by locals for good harvests, for protection against flood and earthquakes, as well as to offer thanks to the gods. It was said that after death, people's souls returned to Taishan for judgment, and so multiple temples and shrines cover the surface of the mountain. Mount Tai is now a UNESCO World Heritage Site.



GOD OF WEALTH | METAL *Cai Shen*

Cai Shen is the God of Wealth and Prosperity in Taoist cosmology. He can grant wealth and ward off bad luck. His name is often invoked during Chinese New Year's celebrations, where well-wishers bestow prosperity upon others.

This card indicates good fortune. It symbolizes change for the better, now or in the very near future. Cai Shen supports your pursuits.

If inquiring about children, it means a new addition can be anticipated for the family. It could also indicate significant improvement for children in school or in their behavior.

If inquiring about career, it signifies a good turn in luck either in your current job or a new one.

If your focus is health and healing, this oracle indicates that help is here to release unhealthy energies and direct you



toward the road to recovery.

Before embarking on your travels, ask the God of Wealth to watch over your home. He is also known to answer prayers for harmony in relationships by providing opportunities to mend or improve relations with friends, family, partners, or lovers.

Visualize and pay respects to the energy of Cai Shen and ask for his help. Don't be afraid to ask for what you want; fearing that it won't be granted can stop the energy flow. Wealth is just another form of energy.

Tie up loose ends and pay off emotional debts to balance your karma in order to properly receive Cai Shen's blessings.

The God of Wealth and Prosperity is associated with the element of metal, the west, and the fall harvest season. Associated colors are orange, yellow and gold.

BACKGROUND

Cai Shen is believed to have various magical powers, including the ability to ward off thunder and lightning, and to grant wealth to others. He is often shown

carrying a golden rod as well as an iron tool that turns stone and iron into gold. Originally known as General Zhao of the Dark Terrace, Cai Shen lived during the time of the Qin Dynasty. He was a mortal general who rode a black tiger into battle and was armed with exploding pearls. Toward the end of his life, he hid in a mountain to meditate, and there he discovered the Tao. He was later deified and venerated as a god in both Taoism and Pure Land Buddhism. His temples are found everywhere in China today.

Cai Shen is viewed as a symbol of monetary success in modern China, although in ancient times people seldom asked for excessive wealth because greed was considered a negative trait. People asked for better lives, primarily focusing on the needs of basic living. Whether one asked for a good harvest, a large enough dowry to marry off a daughter, or a better life in future generations, it is said that Cai Shen seldom disappointed. This firm belief in popular mythology allowed the tradition of Cai Shen to carry on for thousands of years. He is represented in most Taoist temples, which are considered incomplete without him.



RELATIONSHIP HARMONY | WATER

Xiao Qing & Bai Su Zhen

This oracle foretells a lasting relationship, which can assume any form: romantic, business, friends, family, or even acquaintances and peers. Meaningful relationships often require only that you take the path that your heart directs. But this doesn't mean that your path will be smooth. The story of Xiao Qing and Bai Su Zhen illustrates a destined bond that eventually bears fruit.

If you are asking about the fate of a specific relationship, encountering this card means that patience is advised. The ancient Chinese believe that relationships must be nurtured over the course of many years and will right themselves in a timely manner.



An uplifting friendship is not measured by tangible things. Jealousy is one of the most damaging ingredients that prevents friendships from blossoming. The story invoked in this oracle teaches us of selflessness. Although Xiao Qing loved her friend Bai, she unselfishly set aside any personal possessiveness to help Bai obtain her heart's desires. This card can strongly indicate a reunion with an old or lost relation. You share an incredible, destined bond, and your reunion will be filled with a sense of renewal. It may be with a sibling, lover, or any connection that might be related to karma, past-life promises, etc.

The oracle also advises that good teamwork is needed. You learn to understand and accept each other by working together. When you feel the weight of burdens growing from a relationship, it is no longer harmonious. If you are facing a troubling relationship, try to communicate more effectively with your partner. Do not keep true feelings to yourself, even if they are difficult to convey. Express yourself honestly, as dishonesty will lead to disaster.

BACKGROUND

The famous Legend of the White and Green Snakes, a story of sisterhood between

two snake spirits, occurred in a beautiful area called West Lake in Hangzhou, China. The white snake spirit, named Bai Su Zhen, was practicing Taoist arts in the hope of becoming an immortal when she accidentally consumed magical pills and suddenly gained five hundred years' worth of magical powers. With this new power, she saved a green snake named Xiao Qing who was awaiting slaughter. The green snake became the loyal younger sister to the white snake.

Eighteen years later, the white and green snakes successfully transformed themselves into two young women and joined the mundane world of humankind. There, the white snake fell in love with a handsome young man and they eventually married. But circumstances forced her into revealing her true self to her husband, who died in shock when he realized that his wife was a massive white snake.

Through a long, difficult journey where the two snake sisters were tried and tested by many hardships, and where their undying loyalty and love for each other helped them achieve the impossible, the white snake's husband was finally brought back to life. Bai Su Zhen and Xiao Qing are symbols of sisterhood, camaraderie, friendship, and above all, loyalty to one another.



SPACE CLEARANCE | FIRE *Zhong Kui*

Environmental space includes workspace, home, and car. These areas may be dirty, stagnant, decaying, or cluttered with undesirable objects and associations.

Personal space includes emotional and behavioral patterns. Negative energies in those areas include lack of energy, anger, depression, anxiety, jealousy, excess grief, unpredictable mood swings, fatigue, and various health issues.

You may be emotionally out of balance; your mind and body might be out of sync with each other. Symptoms may be nightmares, unexplained health issues, and out of control behaviors with unknown causes.

It is a Taoist custom to regularly cleanse your physical space. This could also include energy work in Feng Shui. Cleansing is straightforward. Find an open space to clear your mind. Spend



time to detox in a natural setting close to water, a forest, or a mountain. Use breath work to rid yourself of the bad chi fostered in your system so you can see and think clearly.

A diseased body could be the result of poor nutrition or lack of exercise and sleep, among many other things. To cleanse your body, understand the cause of the physical ailments. Use tai chi and qi gong to enhance your energy. Taoists have always believed that cultivating chi is one of the most effective wellness techniques, and you need to maintain vital chi flow for a young and disease-free body. Pay attention to what you put into your system. Eat healthy and drink a lot of fluids.

Cleansing the environmental space requires actual hygienic cleansing of the living and working areas. Clutter must be removed, and ample space must be available for chi to travel through. Repair any signs of aging and decay. In addition to a physical cleansing, spiritual cleansing may be necessary for some areas. To cleanse your space of unwanted spiritual energy, you may follow these steps after you have physically cleansed the space:

1. Use sage, essential oils or incense to neutralize the negative energy. You may choose any of these three. You should use the one that resonates with your cultural or spiritual orientation.
2. Use sound, music or bell to cleanse the energy of spiritual toxins.
3. If you doubt your ability to confidently do the above, seek assistance from a professional who can guide you through this process.
4. Be sure to surround yourself with healthy, happy, positive people who will contribute to your well-being and bring good energy to your space.

BACKGROUND

Zhong Kui is traditionally recognized as a guardian spirit who can vanquish ghosts, evil beings, and negative energy. Zhong Kui was an incredibly ugly man when he was alive as a mortal human, although he was very accomplished academically. He won top honors in the imperial examinations in the capital and was due to hold a high government post, but his title was stripped by the emperor because his visage was terrifying to behold. Zhong Kui committed suicide on

the palace gates due to this unfair treatment. He was damned to hell because of his suicide, but the King of Hell saw potential in him, recognizing his talent and intelligence. He gave him the title King of Ghosts and charged him with the task of forever hunting, capturing, and commanding ghosts, his face terrifying those in the underworld. To this day, Zhong Kui's image is seen at the front door of many Chinese households and businesses as his presence is said to ward off evil spirits.



INNER WISDOM | WOOD *Shen Nong*

Believe and live the idea that time passes without mercy and that it is foolish to not have fun while you can. You learn from experience and gain wisdom by going through life with a positive attitude. Whatever your accomplishments, whether they are mundane or extraordinary, you have lived. That alone calls for celebration. Understand that society can be complex and brutal and it is easy to become a slave to social expectations. Nature existed before your arrival, and will continue to live after your passing. Why not treasure your existence today, and stop worrying about what will happen next? Sometimes it's important to forsake your responsibilities and worries, if just for a short moment, in order to regain an innocent intimacy with your world. Rediscover your connection with children, regardless of the age and wisdom you have accumulated over the years. Allow yourself to be as silly as a child, and leave behind life's problems.



Set time aside to nourish your body and soul. You are a diligent worker but lately you have been overly industrious. Now is the time to pause and reflect upon the wisdom that you have gained. Take a much needed break, you hold the key to the answers to your questions.

Share that wisdom with your loved ones, especially in teaching the younger generation. Go to places and visit people that you have always wanted to, but have avoided for many years.

BACKGROUND

According to Chinese mythology, Shen Nong was an early emperor with deep wisdom. He established an agricultural society in China and his research of medicinal plants became the basis of later herbal studies.

Shen Nong was considered the founder of Chinese medicine, and his name literally meant “Divine Farmer.” He was believed to have classified 365 species of herbs or medicinal plants, later the basis of his biological studies. While testing the many plants on himself, he discovered tea to be his default antidote. According to legend, Shen Nong accidentally discovered tea when tea leaves from

twigs being used for fire rose up on a column of hot air and subsequently landed in the water being boiled. He tasted the brew and never turned back. Since then, he has labeled tea as an antidote for over 70 different poisonous herbs. Tea in China is still viewed as a cure-all for many common ailments.





CONFLICT | EARTH *Wu Huang*

Wu Huang (also known as Five Earths) represents conflict. It is the convergence of five forces fighting each other for dominance of the middle ground. There are casualties and ill feelings, with no resolution in sight.

The first conflict pertains to decision-making. There are different opinions behind each decision, creating distractions and illusions. It is important to walk away at this time. Remain on a higher plane and stay in the center of the decision-making. Rise above heated discussions and calmly assess the nature, purpose, and motive of each opinion. Don't let others influence you.

If you seek guidance regarding career, business, or investment opportunities, it's important to slow down and contemplate what you are really asking. It is not the right time to make quick decisions.



Some opportunities may look good on the surface, but the five forces will not guarantee smooth sailing. Various things around you may accidentally cover the truth and mislead you to an unfavorable conclusion. Try to unveil the truth and take command of all information before reassessing your situation. Your greatest enemy right now is impulsiveness. For example, if you are attempting to acquire property that others are also fighting for, it is wise to step back to reassess.

The conflicts behind relationships are much more involved. It's not only you who is confused and in conflict with yourself, but also everyone else involved, including friends and family who feel they have a stake in your relationship. This is a time for you to do nothing and wait for the storm to pass. You will know it when you have found yourself again.

If you encounter this card when asking about health, do not jump to any conclusions. It's important to be patient and acquire information from more sources before you can see a clear picture. If asking about family, understand the Chinese saying: "Every family has a sutra that they cannot recite in public." But encountering this card means that you will experience more than the basic family strife or dirty

laundry that no one wants to air.

There will be at least one character in your life who acts with intent to harm. It is time to ignore the negligible and walk away from a collision. At a time of Wu Huang, whatever you say in any discussion will be used against you. Again, ignore, do not participate, and rise above the pettiness of the situation. The same advice pertains to friendships, acquaintances, or any other common relationships in daily existence.

There are some conflicts you aren't aware of involving people behind the scenes, yet you have the nagging feeling that something is not right. Trust that the universal wisdom will resolve these conflicts. It is not your time to win over any favors. Let the difficult times pass, and with patience, love, and integrity, you will come to a natural conclusion.

This card is fundamentally different from the Change of Directions or Transformation. Nothing irreparable has happened yet. The fate of this matter is in your hands, and you have complete control. This card tells you to walk away and do nothing at this time. Remove yourself from anger and remain detached both emotionally and physically.



BRIGHT FUTURE | BALANCED ELEMENTS

Depart from the conflicts and surround yourself with the wood element, such as forests and gardens. This card is about a great future, a new stage of your life, and all auspicious happenings. The door of nature has opened wide. Enter and gaze upon the living, vibrant world. The natural world awakens to the voice of hope and lives in the now. Connect with nature to regenerate your life force and dissipate your stress by tuning into the natural rhythm of an ecosystem and leaving behind the strident demands of an artificial environment.

What you have endured was part of your life journey and purpose. Long suffering is over. No matter how impossible or desperate the current situation is, it is only an illusion, which will soon disappear if it hasn't already.



Goodness sometimes comes with sacrifice, whether it takes the form of a separation, failure, loss, or unbearable ending. However, these are the forces of rebirth. Your next journey will bring you to a higher purpose. Go for it without fear or delay. The healing comes with your willingness to accept the truth of where you now stand at this stage of the journey and convert the valuable lessons learned into an enlightened inaugural point to move forward.

From now on you will feel different; you will be more focused; you have absolute clarity of what needs to be done, and you are confident you are no longer alone.

Your loved ones are still with you. Although their spirits have ascended to a higher plane of existence, their memory, their touch, their words live with you eternally. You can talk to them anytime, much more easily than ever before. Your loved ones want you to know they are at peace and they are okay. As spirits, we can communicate in unlimited and often unexpected ways. These precious messages from our teachers, guides, and loved ones may present through a butterfly, a ladybug, a feather, rainbow, familiar song, a name or even via déjà vu.

The good luck and timely opportunities are encompassing you from all directions. Act now.

You may even want to take a vacation away from the places that remind you of your heartache. Upon your return, you will brim with fresh ideas and energy.

Live with that hope. All karma that is not fulfilled in this lifetime will continue in future incarnations. You will be given another chance. You may even have an addition to your family.

Deer symbolize the enticing lure of new adventures. This card is encouraging you to look for new perceptions to grow. With a pleasant surprise, you find an inner relief when you experience the freedom new hope starts to bring you. You grow wiser, calmer, and more confident. Now you can take a long, deep breath, and celebrate a new beginning.



ZODIAC

FOCUS *Rat*

Your energy is associated harmoniously with the element of water. This water energy gives you the profound powers of imagination, contemplation, and strategy. It is okay to be an opportunist if you see the direction ahead clearly. You know how to make the best of each situation for yourself and for those you care about.

Ideas constantly emanate from your restless mind. You are industrious, a perfectionist, endlessly pursuing an ambitious personal goal. Do not spread yourself too thin; focus is the key to success! Take it one step at a time. You have either the wisdom or the ability to obtain resources that others cannot. Use them efficiently to reach the finish line.

The rat is not often associated with bravery, yet on the contrary, the rat moves swiftly without fear. Intuition is strongly ingrained in you. You can anticipate danger or good luck well in advance.



Use that powerful sense daringly to find shortcuts to meet challenges and solutions to your problems.

Are you feeling betrayed or left out? Are you upset with what you perceive to be unfair? The world was made with fairness and unfairness. Let the natural law of the universe be the ultimate judge. The rat's water energy is affiliated with deep emotions. Feelings such as fear, sadness, and anger will distract you from your target.

Water is also associated with financial abundance and prosperity. Although you are a faithful provider to your loved ones and a selfless lover of your family, you do not need to cause undue stress to yourself by calculating each step you take. In addition, do not let the dread of scarcity block you from creating abundance for many years to come. As a Taoist would say, "You will never lose it if it is being held lightly."

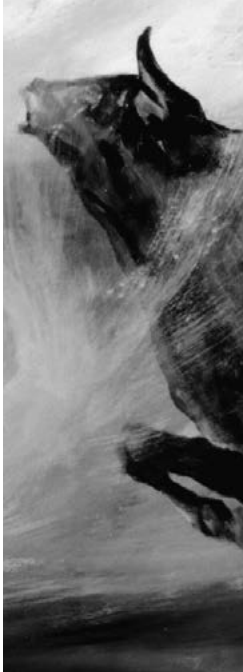
Water energy is key to nurturing any relationship, whether it be romantic, platonic, professional, or familial. All things are energy. Don't let your precious space be occupied with energy that doesn't benefit you. Clear the clutter, whether physical or mental, to help yourself focus.

GROUNDING Ox

You are the symbol of strength, stamina, and responsibility. You are imbued and connected with the great mother earth such that you become an icon of earth yourself. This gives those around you support and acceptance, as well as nurturing and unyielding love. You make them feel safe.

The ox card cautions you to be calm when dealing with challenges and stress. Don't let yourself be pushed or make a quick move based on limited information. Don't expect others to always understand you. In fact, in most cases you will be misunderstood. Your sense of right leads you to face those challenges and endure hardships that others would avoid.

You place great trust in others. You care about them and instinctively understand their needs. Those traits are what make others want to follow you. You openly show others by doing and setting an example.



You exude strong confidence and inspire the same in others. Continue to use this down-to-earth quality and power to command.

The ox card foretells of a positive move in a relationship. In order to maintain a meaningful relationship, communicate with your partner openly and honestly. Take a deep breath and cool down when confronted with conflicts. In hectic situations, remember to ground yourself. Your temper can drive away those who love you. This card is closely tied to family. All of your loved ones are well protected by the spirit of mother earth. Ox is asking you to give yourself a break. You are a workaholic and you don't properly care for your body. Give yourself some down time and balance work with play. Your family members cherish you more than the financial benefits you worked hard to bring in.

When you feel overwhelmed and stressed, you may have too much earth energy. In this case, your earth energy is doubled due to the fire around you. Spend quality time outdoors — especially in rocky mountains or shade gardens to settle your emotions. Any excessive earth element can be removed by blending it with the wood or metal element. Rocks are part of the metal element, and gardens belong to the wood element.

CONFIDENCE *Tiger*

This is a fortunate card; it is a card of authority and dignity. At the moment, the situation you're involved in is under control. You can move forward slowly and steadily. Your gift of clairvoyance and clairsentience can help you accurately assess the situation and make the right decisions along the way.

Your hunger for knowledge will constantly take you on a journey. It might be physical, spiritual, or mental. You always return with a refreshed and restored focus but you remain modest.

Remember you are a natural leader and often a source of inspiration to others. You are an original, unconventional thinker. You are brimming with ideas and generate tremendous energy and enthusiasm. But if you are overconfident, you may miss critical steps.

Be patient when it comes to passion and romance. You attract



many, but don't be too impulsive in making a decision you may later regret.

Even though you are extremely capable, you do sometimes let others manipulate you. You may seem rough on the outside, but you have the heart of the Goddess of Compassion, Guan Yin. Getting this card may signify that you need to bolster your confidence and self-esteem. Although you find it difficult and do not have the heart to end even a dysfunctional relationship, you must learn to say 'no.'

Tiger is connected to wood energy, which is associated with emotions. Don't criticize yourself when you have mood swings, because you are quite sensitive to feelings and are easily drawn into the subconscious world of emotions, especially past-life memories. When you get too emotional, it is a sign that you have too much wood energy. Excessive wood energy can be decreased by acquiring some water element, for example by soaking in a salt bath, or by adding a metal element, such as engaging in repair work around the house using metal tools. It is absolutely essential that your body get constant nurturing from drinking pure water. You can also find healing elements from lakes, brooks and oceans. A balanced diet, regular exercise, and sufficient sleep are crucial to settling your emotions.

TRUTH *Rabbit*

It is time to heed the incessant call of your intuition. Your plans are coalescing. Start to execute them. Believe what you realized and be determined to pursue your life purpose through what you have found. Do not procrastinate!

You can accomplish anything if you utilize your talents and step out of your comfort zone. Nonchalance will block your creative flow. Talented and artistic, you exhibit ability in many interests, but never focus on one pursuit long enough to master it. You have big dreams, but consistency is often lacking, leading to unrealistic goals. Don't get sidetracked and distracted from your target. Strengthen your willpower to maintain the drive necessary to reach your objective.

You are an old soul, more capable than you know, possessing wit, knowledge, and a love of people. Your great sense of humor,



optimism, and loyalty contribute to your being well liked. You have a very friendly and caring nature, both sensitive and emotional. Your attractive demeanor and smart look bring you many romances. Stay grounded and remember your anchor. Yet, you can still be adventurous and live your love life to its fullest.

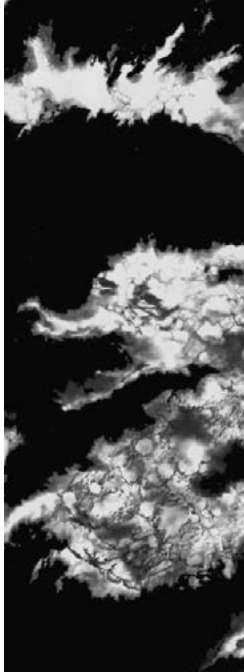
Rabbits tend to be lucky in life, finding the right place at the right time. You will be abundantly provided for. When an opportunity comes your way, react quickly. Your charisma, kind heart, and savoir faire make you a center of attention. You know that the world is not just black and white. Nevertheless, you sometimes intentionally ignore the shades of gray. You can be closed and stubborn when you think others don't like you, causing people to misunderstand how you truly feel. Learn to welcome constructive criticism.

Being associated with the wood element, the outdoors is a healing environment for you. Connect with nature often to enjoy tranquil replenishment. If you find your morale is low, a fire element will give you a boost. Some types of fire elements are sunlight, the color red, and uplifting, positive people.

POWER *Dragon*

Let go of your worries and frustrations! You control the situation. This is a good luck card replete with prosperity and success. In pursuing what you want, don't let your sensitive heart stop you when others say you are arrogant. Most people can't see your soft side. You are loving and extremely discerning. You usually know what's going on. However, don't expect the same from others. You can be your own worst enemy, so be gentle to yourself and be patient.

You have a strong connection to the ancient world. You seem to know things clairvoyantly and receive valuable spiritual insights and esoteric knowledge from this connection. Use this discernment to center yourself and exercise tolerance to bring friends closer. This card is assuring you that you have the power to deal with any situation you have run into lately. You possess the great strength of earth. Your power comes from



the perfect blending of the cosmic elements of fire and earth. Your fire partner is your faithful companion, Phoenix, who is rising up now to remind you to stay balanced. You inspire others with your honesty and wit. Your energy is vital and powerful despite your infamous reputation for being headstrong. You know what to do to get things done. Still, be careful not to give your opinion to win more followers before you know all aspects of the subject at hand. Let others underestimate your true strength. Your impact will be so much greater than it appears that you will be able to go forward without moving. The card advises you not to abuse that power; avoid dramatic action unless it is necessary.

Although you have enormous confidence, are very assertive, and are fully aware of your abilities, you sometimes allow fear to plague you. This card is an affirmation that your willpower can help you remove all obstacles and nothing can stop you from overcoming the challenge. Yet cooling down is necessary to preserve energy. Don't let yourself be agitated by unimportant matters.

Be practical. Knowing when to stop can save you from many headaches and poor health. Learn to adopt changes. Water and metal elements, such as rock and earth crystals, can balance your tendency toward extreme earth energy.

OPPORTUNITY *Snake*

Your time has finally arrived. Your wisdom is garnered from years of contemplation, planning and experience. In fact, this card is telling you that the planning stage is over. You are about to make a move — a smart move.

Coolness and inaction are exactly where your strength comes from. You prepare well, and the information you gather supports you in all of your endeavors. You are a fire element with great yin. Yin fire ignites healings and connections between the spiritual and the physical. You are on the tree high above the water. The water from the lake in this image harmonizes with your yin fire. It portrays a perfect balance.

Snake symbolizes rebirth. This can mean that some significant changes are coming to your life. Something old and negative will metaphorically die as the new and positive emerges. Perhaps you



are in the middle of a powerful transition, and you need to get rid of many old attachments to embrace the new self. Most often, you don't show what you know and keep ideas to yourself. This card reminds you to share your wisdom and knowledge because it is safe to do so.

Your extensive analytical and logic skills make you a formidable competitor. Consequently, you are not good at handling losses. However, failure often teaches more than success. The snake card is asking you to take a deep breath and use your great wisdom to benefit from learned lessons.

This card also indicates that you have a keen interest in the arts and are an avid reader. Perhaps it's your time to become an author. The opportunity is here.

The mysterious and unknown fascinate you. Your psychic energy helps you to tap into that world of the unconscious and you continue to learn from it. Remember to step out into the sun once in a while. The great yang energy of the sun helps you integrate what you have learned into valuable knowledge for humankind.

FREE SPIRIT *Horse*

This card is an auspicious harbinger of abundance.

You are hard-working and self-reliant, able to summon extraordinary levels of energy and concentration. This is the exquisite quality of your yang fire energy. Once committed to a plan, you can move forward like the wind. You make decisions very quickly. But, be patient, because you will often need to revisit the decision.

You are an eloquent and persuasive speaker as a leader. You like people and always have admirers. You have a very good heart and help others. The card advises you not to be overly talkative. Promise less and perform more.

You treasure your independence and freedom, and you are strongly predisposed to do what feels right. You don't like to be limited by excessive rules and regulations. Sometimes you see



your way as the only way. Be careful to avoid taking on too much risk or giving in to your stubborn streak. Learn to let go!

You are good at all kinds of relationships and have strong bonds with family members. In personal relationships, you have a tremendous need for intimacy, belonging, and romance. However, at heart, you remain rebellious and refuse to be cornered. Family obligations become a burden, which gives you enormous stress. Stop being so concerned. Be simple. Simplicity is letting go, achieved by delegating and trusting others to take on some of your workload and responsibilities.

This card also foresees travel ahead. Travel can help balance your yang energy with surrounding yin elements, especially when crossing oceans. Deep emotion and temper often accompany you. Find natural remedies when your emotions are out of control. Nature is a big source of your healing.

You are a perfectionist and always get yourself deeply involved in everything you do. Moreover, sometimes your interests are spread too thin, so you may leave one project unfinished while moving on to another.

You enjoy challenges and work efficiently under pressure. Your many talents and

gifts often lead to a disorganized state. Learn to focus and manage one task at a time. Moderate your idealism with some reality and don't be overly ambitious. Make sure you take time out to nurture yourself.





CAUTION *Goat*

You are intuitive, sensitive, and sensual. Although you are shy by nature, you never lack for protective friends and admirers. Stay positive! You are overly cautious about letting people get truly close to you for a reason. Yet, people generally feel relaxed in your company and you do welcome a few special ones into your circle. This card could be a premonition that someone is not telling you the whole story. Try not to rely on the information given; find the answers for yourself. Your instinct is right! Think through your options.

You are artistic and industrious, contributing much to your community. But you do not like being left alone, especially when it comes to decision making. Sometimes you choose to follow rather than lead. Sometimes you can't make decisions because you care too much or because you are afraid. The card of the goat is expressing to you that the circumstances are



unclear. It's okay not to make any final decisions now. Understand both sides of the matter before advancing.

Although you are very serious and accomplished, you are easily intimidated by others. Be strong and don't let anyone tell you that you are not good enough.

You are powerfully grounded and have a direct connection with nature. You are an earth element, enjoying animals and the calm of the countryside.

Romance and love are also very important to you, without which you would not function well. Be assured that they are on their way. Believe in yourself, for doubt will numb your gentle spirit. Enjoy the present and let the past go.

You are constantly searching for spiritual truth and enlightenment. In your heart, you know there is a better place. However, finding the balance between the physical and spiritual worlds challenges you. Believe everything will be resolved in the most positive way and everyone involved will gain important insights from their experiences.

TRICK *Monkey*

Things look good, but there are lingering doubts about the future. Instability is the nature of this situation. Don't get too involved; observe and use the monkey's natural skills to handle this matter accordingly.

You are very practical and your clever metal energy leads you into lucrative business relationships. The monkey's skills are being inquisitive, industrious, and insightful, and always looking for opportunities to learn. You have high self-esteem and confidence in your abilities. You are brilliant and socially advanced. But, this time, try to be more open to others' advice; don't just hear — listen.

You are quick-witted; a creative, daring thinker. Try an oblique route to solve your problem. A direct approach will not work given the many aspects of this matter that have not yet been fully revealed. While you are waiting for more information, you can



engage in other ventures, as you are good at juggling several tasks simultaneously.

The monkey invokes the energies of charm and charisma — great metal energy in both intelligence and ingenuity — for resolving difficult problems. You can be persuasive and attract many friends with your magnetic personality and natural skills in diplomacy. Right now, the Monkey card is asking you to wait, because assistance from within your network is forthcoming. Trust those who trust you.

If you still feel it is necessary to move forward with what you have in mind, understand that there is a risk. Remember that material accumulation is a double-edged sword. Setting a limit and knowing when to stop can save you. There is an endless supply around you. Enjoy what you have, but don't hoard.

Your luck, good or bad, will soon shift. Closely monitor the situation. If things change drastically, you may need to have a contingency plan ready to implement.

A lot of mental energy has been used in dealing with what you have encountered. Increase your clarity with the nurturing earth element, which can help you prepare for the future. Although it might be a tough lesson to learn, the outcome is essentially rewarding. You will win in the end. You always do.

COMMUNICATION *Rooster*

You are approaching a period of life when you are genuinely happy and carefree. Roosters are gregarious, social and very accomplished. You enjoy being the center of attention. Whether it is public speaking, singing, writing, or even storytelling, you crave visibility. You also know you are beautiful. Flaunt it!

Roosters are noted for doing anything in their power to perfect their talents and skills. They are much loved and respected by those who know them well.

You are practical, but also a deep thinker and big dreamer with a very active, boastful imagination. You usually know how to get what you want with your angelic metal energy, but, if your plan goes awry, don't become moody and downcast. The rooster card is encouraging you to employ your greatest



strength, your strong communication skills, to accelerate your progress. You are exactly the right person to spearhead a marketing campaign that will advance your business. Highlight the services that you offer that are special or unique. Don't be afraid, you are simply stating the truth.

Your words are inspirational and powerful. Still, choose your vocabulary carefully. Whether you speak lovingly or harshly, your words will have an impact. Make sure that impact is what you intended.

This card also advises you to adopt a more flexible outlook. You are an industrious worker, organized and business savvy. But, surprises discombobulate you. You prefer a schedule to be well planned and adhered to. You expect life to be orderly, precise and efficient. The world is rarely that. Flexibility is essential to be successful in the real world.

Your element is metal. Metal energy can be associated with abundance. Prosperity is within your reach like low-hanging lychee fruit. You need to see it and believe it is there. The opportunities are endless.

INTUITION *Dog*

Dogs are loyal, faithful and true, and they make the best of friends. Your sense of fairness, honor and duty are your personal hallmarks. You earn respect, friendship and love from all who know you. This card is directing you to expand more socially outside your small circle of friends because you have a strong need for companionship.

You are kind and straightforward and your integrity won't allow you to tolerate injustice or unfairness. But be patient and take the time to know someone. A good relationship needs the right atmosphere to manifest.

You, too, are an old soul who has gathered much experience through many lifetimes. You can still learn, and there are many new ideas that will benefit you. Try not to be inflexible and resistant to adopting changes in your behavior. There is a



reason why you are here again in this life cycle. We are all here to learn.

Your element is earth. Worrying about everything is a weakness of the earth element. This card is assuring you that your family, including pets and deceased loved ones, are all doing well. You know that yourself. In fact, you communicate beyond the physical sensory. You can see and feel the great light from heaven.

Heavenly love is reaching out to comfort you, and earthly abundance is asking you to be ready to receive. You have given much, and it creates balance to receive.

Your intuition can sense emotions and events far in advance. Pay attention to it because the subtle energy from the worlds beyond is sending you the answers or cures you are seeking. You have the gift of receiving that message in many different ways. Share it with the people who come across your path because you are a true messenger whose mission is to help the world to reach its enlightenment.

Don't be judgmental, especially regarding errors you have committed. Focus on what you have done gloriously instead, and learn from those lessons. Being too hard on yourself will prevent you from growing. A Taoist believes that no happiness is free of sadness. If you feel sad, it means that happiness is approaching.

CONTENTMENT *Pig*

Your element is that of water, the most nurturing element on earth. Water flows to occupy low areas in the land to help nurture wherever it is needed. As described in the *Tao Te Ching*, “the greatest goodness is like water.” It serves all life without being conspicuous. It flows to the lowest places, which others choose to avoid.

Pigs are honest and tolerant, and often make true, supportive friends for life. They are highly regarded for their chivalry and pureness of heart, and they will sacrifice their own well-being for the greater good. They are intelligent and conscientious workers and willingly volunteer their services to others, especially if the work is for a cause they highly value. They rarely harbor grudges or act vindictively.

This card's message for you is that you can also be very naive, and you may easily fall victim to those who take advantage of your



idealistic nature. You see everyone as being as loyal and caring as you are, and you hold fast to the notion that everyone at heart is decent and admirable. You like to please others and are always ready to give your time and resources; you have a hard time saying no. The spirit of the pig advises you to exercise your humility with dignity and don't let anyone put you down. Don't waste your effort on those who don't appreciate it.

On the other hand, you should be free of worry. You will be provided for financially. Sometimes money may seem a little tight, but there is always someone or something that comes to your aid. Your kindness is forever rewarding. Remain humble and giving, which unmistakably will bring you endless good luck and financial abundance.

Don't worry about relationships or family matters. Everything and everyone is well. Be happy and content with who you are and what you have. Although you are very quick to recover from setbacks, you should not judge your actions critically. Be self-assured. You have all that you need to accomplish what you want in life. Cherish and love yourself.

You have taken to heart the greatest Taoist teaching, "Soft is strong; great is low."



ZODIAC ANIMAL CHART



Rat
Water

02/05/1924 - 01/23/1925
01/24/1936 - 02/10/1937
02/10/1948 - 01/28/1949
01/28/1960 - 02/14/1961
02/15/1972 - 02/02/1973
02/02/1984 - 02/19/1985
02/19/1996 - 02/06/1997
02/07/2008 - 01/25/2009
01/25/2020 - 02/11/2021



Ox
Earth

01/24/1925 - 02/12/1926
02/11/1937 - 01/30/1938
01/29/1949 - 02/16/1950
02/15/1961 - 02/04/1962
02/03/1973 - 01/22/1974
02/20/1985 - 02/08/1986
02/07/1997 - 01/27/1998
01/26/2009 - 02/13/2010
02/12/2021 - 01/31/2022



Tiger
Wood

02/13/1926 - 02/01/1927
01/31/1938 - 02/18/1939
02/17/1950 - 02/05/1951
02/05/1962 - 01/24/1963
01/23/1974 - 02/10/1975
02/09/1986 - 01/28/1987
01/28/1998 - 02/15/1999
02/14/2010 - 02/02/2011
02/01/2022 - 01/21/2023



Rabbit
Wood

02/02/1927 - 01/22/1928
02/19/1939 - 02/07/1940
02/06/1951 - 01/26/1952
01/25/1963 - 02/12/1964
02/11/1975 - 01/30/1976
01/29/1987 - 02/16/1988
02/16/1999 - 02/04/2000
02/03/2011 - 01/22/2012
01/22/2023 - 02/09/2024



Dragon
Earth

01/23/1928 - 02/09/1929
02/08/1940 - 01/26/1941
01/27/1952 - 02/13/1953
02/13/1964 - 02/01/1965
01/31/1976 - 02/17/1977
02/17/1988 - 02/05/1989
02/05/2000 - 01/23/2001
01/23/2012 - 02/09/2013
02/10/2024 - 01/28/2025



Snake
Fire

02/10/1929 - 01/29/1930
01/27/1941 - 02/14/1942
02/14/1953 - 02/02/1954
02/02/1965 - 01/20/1966
02/18/1977 - 02/06/1978
02/06/1989 - 01/26/1990
01/24/2001 - 02/11/2002
02/10/2013 - 01/30/2014
01/29/2025 - 02/16/2026



Horse
Fire

01/30/1930 - 02/16/1931
02/15/1942 - 02/04/1943
02/03/1954 - 01/23/1955
01/21/1966 - 02/08/1967
02/07/1978 - 01/27/1979
01/27/1990 - 02/14/1991
02/12/2002 - 01/31/2003
01/31/2014 - 02/18/2015
02/17/2026 - 02/05/2027



Goat
Earth

02/17/1931 - 02/05/1932
02/05/1943 - 01/24/1944
01/24/1955 - 02/11/1956
02/09/1967 - 01/29/1968
01/28/1979 - 02/15/1980
02/15/1991 - 02/03/1992
02/01/2003 - 01/21/2004
02/19/2015 - 02/07/2016
02/06/2027 - 01/25/2028



Monkey
Metal

02/06/1932 - 01/25/1933
01/25/1944 - 02/12/1945
02/12/1956 - 01/30/1957
01/30/1968 - 02/16/1969
02/16/1980 - 02/04/1981
02/04/1992 - 01/22/1993
01/22/2004 - 02/08/2005
02/08/2016 - 01/27/2017
01/26/2028 - 02/12/2029



Rooster
Metal

01/26/1933 - 02/13/1934
02/13/1945 - 02/01/1946
01/31/1957 - 02/17/1958
02/17/1969 - 02/05/1970
02/05/1981 - 01/24/1982
01/23/1993 - 02/09/1994
02/09/2005 - 01/28/2006
01/28/2017 - 02/15/2018
02/13/2029 - 02/02/2030



Dog
Earth

02/14/1934 - 02/03/1935
02/02/1946 - 01/21/1947
02/18/1958 - 02/07/1959
02/06/1970 - 01/26/1971
01/25/1982 - 02/12/1983
02/10/1994 - 01/30/1995
01/29/2006 - 02/17/2007
02/16/2018 - 02/04/2019
02/03/2030 - 01/22/2031



Pig
Water

02/04/1935 - 01/23/1936
01/22/1947 - 02/09/1948
02/08/1959 - 01/27/1960
01/27/1971 - 02/14/1972
02/13/1983 - 02/01/1984
01/31/1995 - 02/18/1996
02/18/2007 - 02/06/2008
02/05/2019 - 01/24/2020
01/23/2031 - 02/10/2032

For our complete line of tarot decks, books, meditation cards, oracle sets, and other inspirational products please visit our website:

www.usgamesinc.com

Follow us on:



U.S. GAMES SYSTEMS, INC.

179 Ludlow Street

Stamford, CT 06902 USA

Phone: 203-353-8400

Order Desk: 800-544-2637

FAX: 203-353-8431